

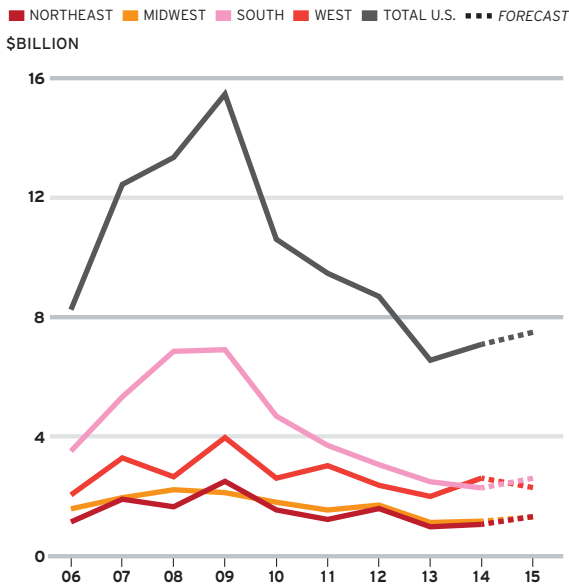
MARKET FOCUS

GOVERNMENT BUILDINGS

Even though the U.S. economy is steadily improving, growth in the public-building sector has been stymied by the fiscal condition of federal, state, and local governments. Only a slight uptick in spending is forecast for 2015.

Government-Building Starts by Region

In addition to U.S. total and 2015 forecast figures



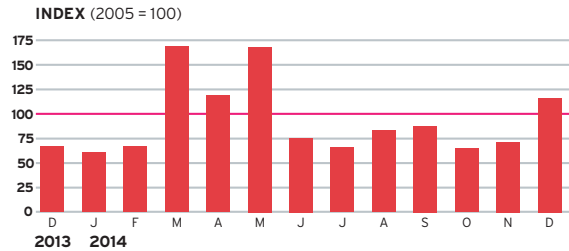
Top Metro-Area Markets

Ranked by total government-building starts 1/2013 through 12/2014

Rank	Region	\$Millions
1	SAN DIEGO	1,009
2	NEW YORK	565
3	WASHINGTON, D.C.	415
4	LOS ANGELES	412
5	MINNEAPOLIS	288

Thurgood Marshall U.S. Courthouse Renovation, New York; Beyer Blinder Belle Architects & Planners (ARCHITECTURAL RECORD, Feb. 2014, page 96).

The Dodge Index for Government-Building Construction 12/2013-12/2014



The index is based on seasonally adjusted data for government-building construction starts. The average dollar value of projects in 2005 serves as the index baseline.

Top 5 Design Firms

Ranked by government-building construction starts 1/2011 through 12/2014

- HOK**
- Skidmore, Owings & Merrill**
- Heery International**
- KMD Architects**
- DLR Group**

Top 5 Projects

Ranked by government-building construction starts 1/2013 through 12/2014

- \$396 MILLION**
PROJECT: San Diego Central Courthouse
ARCHITECT: Skidmore, Owings & Merrill
LOCATION: San Diego
- \$330 MILLION**
PROJECT: Mule Creek State Prison Infill Project
ARCHITECTS: HOK, Dewberry
LOCATION: Ione, CA
- \$317 MILLION**
PROJECT: New Los Angeles U.S. Courthouse
ARCHITECTS: Skidmore, Owings & Merrill, AECOM
LOCATION: Los Angeles
- \$222 MILLION**
PROJECT: Las Colinas Detention and Reentry Facility, Phase II
ARCHITECTS: KMD Architects, HMC Architects
LOCATION: Santee, CA
- \$200 MILLION**
PROJECT: New Stockton Courthouse, Superior Court of California, County of San Joaquin
ARCHITECT: NBBJ
LOCATION: Stockton, CA

MOMENTUM INDEX HESITATES

In January, the Dodge Momentum Index fell 4.8% to 121.1. Despite the drop, due to a strong end to 2014, the index is still up 5.8% compared to its level 12 months earlier.

The Dodge Momentum Index is a leading indicator of construction spending. The information is derived from first-issued planning reports in the Dodge Data & Analytics Reports database. The data lead the U.S. Commerce Department's nonresidential spending by a full year. In the graph to the right, the index has been shifted forward 12 months to reflect its relationship with the Commerce data.

