

ARCHITECTURAL RECORD

DESIGN

VANGUARD
2008

Emerging
Architects
Hone Their Craft



ALSO
PRODUCT REPORTS
Presenting this year's
outstanding new offerings

McGraw-Hill
CONSTRUCTION

12
2008

\$9.95 A PUBLICATION OF THE MCGRAW-HILL COMPANIES
www.architecturalrecord.com

CEILING & WALL SYSTEMS

[Between us, ideas become reality.]®



2' x 6' Infusions® Accent Canopies | Graphix Dots Red/Grape and Solid Goodness Grape
Lancaster General Hospital, Lancaster, PA | IKM, Inc., Pittsburgh, PA

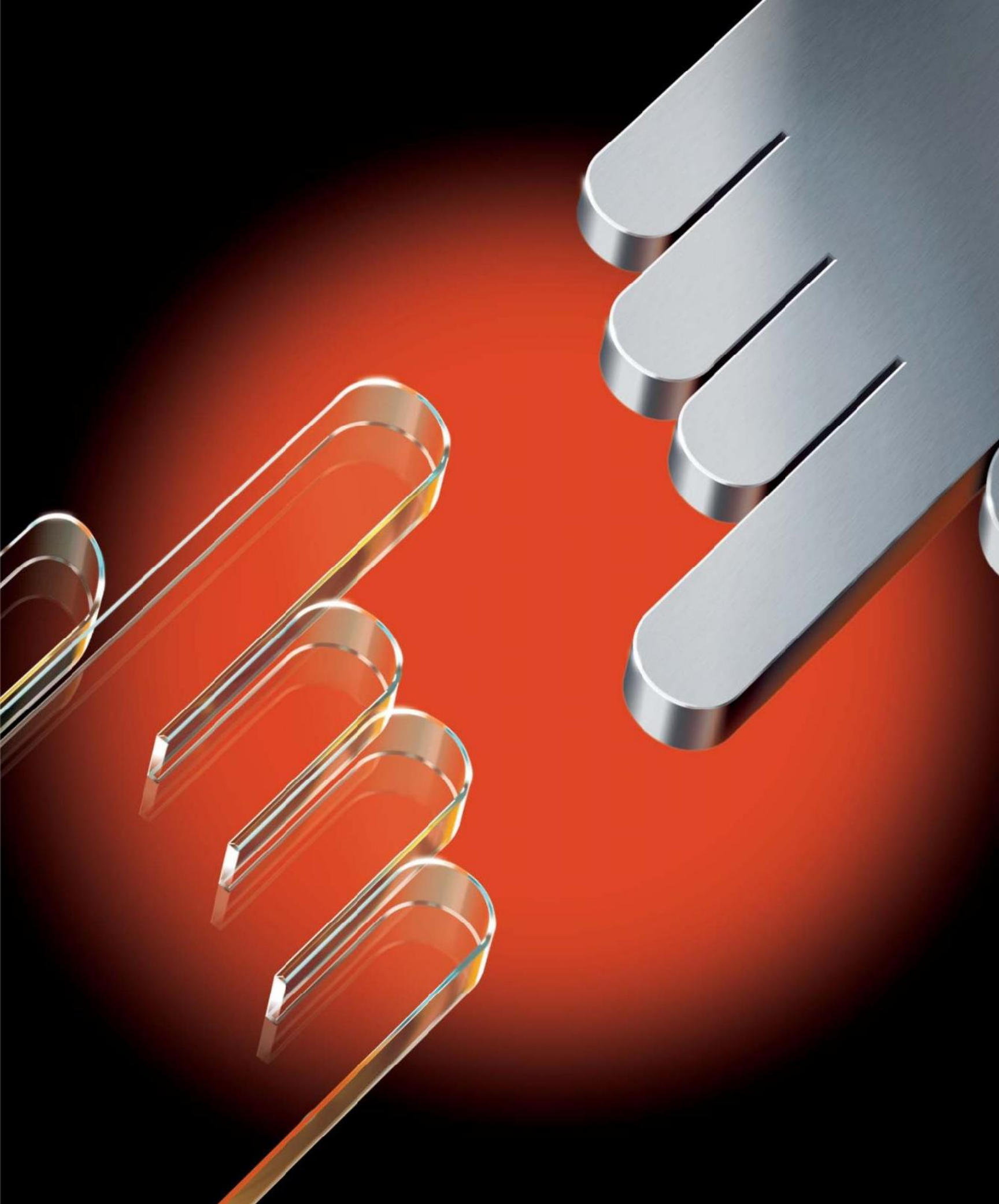


spot on

Infusions® Graphix are the latest playful addition to our Infusions accent canopies line. They come in an exciting range of screen-printed designs with a different visual on each side. So you're free to choose the look that works best for you. Mix and match Graphix with our complementary solid colors and patterns to create an Infusions bouquet. No matter which side you choose, it's sure to be spot on.

visit armstrong.com/infusions call 1-877-ARMSTRONG





announcing the end of finger-pointing






Tired of being caught between the Glass fabricator and the Skylight supplier or the Window and Curtain Wall manufacturer? Who's in charge? Now we are. We've assembled the most comprehensive collection of best-in-class curtain wall, storefront, window, architectural glass and skylight manufacturers and engineering minds in North America—all with one goal. Close the building envelope better and faster. If managing disputes between building envelope suppliers is something you could do without—give us a call. **Simplify your life with Oldcastle Glass.** To learn more, call us at 1-866-OLDCASTLE (653-2278) or visit us at oldcastleglass.com.



U.S. Federal Courthouse, Miami
Architect: Arquitectonica
Custom-engineered Curtain Wall
by Oldcastle Glass®



Oldcastle Glass® *Pushing the building envelope™*

 curtain wall  entrances/storefronts  windows  skylights  glass

CIRCUM™ with LED
is brilliant in both form
and function.



HDI introduces LED lighting,
now available on our CIRCUM
railing system. Enhance your
next design with the perfect
blend of safety and drama.



ARCHITECTURAL RECORD

**VP, EDITORIAL DIRECTOR, EDITOR IN CHIEF
MANAGING EDITOR
SENIOR GROUP ART DIRECTOR**

Robert Ivy, FAIA, rivy@mcgraw-hill.com
Beth Broome, elizabeth_broome@mcgraw-hill.com
Francesca Messina, francesca_messina@mcgraw-hill.com

DEPUTY EDITORS

Clifford A. Pearson, pearsonc@mcgraw-hill.com
Suzanne Stephens, suzanne_stephens@mcgraw-hill.com
Charles Linn, FAIA, Profession and Industry, linnc@mcgraw-hill.com

SENIOR EDITORS

Jane F. Kolleeny, jane_kolleeny@mcgraw-hill.com
Joann Gonchar, AIA, joann_gonchar@mcgraw-hill.com
Josephine Minutillo, josephine_minutillo@mcgraw-hill.com

**PRODUCTS EDITOR
NEWS EDITOR
SPECIAL SECTIONS EDITOR**

Rita Catinella Orrell, rita_catinella@mcgraw-hill.com
Jenna M. McKnight, jenna_mcknight@mcgraw-hill.com
Linda C. Lentz, linda_lentz@mcgraw-hill.com

**PRODUCTION MANAGER
COPY EDITOR**

Juan Ramos, juan_ramo@mcgraw-hill.com
Leslie Yudell, leslie_yudell@mcgraw-hill.com

**ART DIRECTOR
ASSOCIATE ART DIRECTOR
CONTRIBUTING DESIGNER**

Kristofer E. Rabasca, kris_rabasca@mcgraw-hill.com
Encarnita Rivera, encarnita_rivera@mcgraw-hill.com
Clifford Rumpf, clifford_rumpf@mcgraw-hill.com

EDITORIAL SUPPORT

Linda Ransey, linda_ransey@mcgraw-hill.com
Monique Francis, monique_francis@mcgraw-hill.com

EDITORIAL ASSISTANTS

Sebastian Howard, sebastian_howard@mcgraw-hill.com
Anyia Kaplan-Seem, anyia_kaplan-seem@mcgraw-hill.com

CONTRIBUTING EDITORS

Sarah Amelar, Robert Campbell, FAIA, Andrea Oppenheimer Dean,
David Dillon, Lisa Findley, Sara Hart, Blair Kamin, Nancy Levinson,
Jayne Merkel, Robert Murray, B.J. Novitski, Andrew Pressman, FAIA,
David Sokol, Michael Sorkin, Michael Speaks, Ingrid Spencer

**SPECIAL INTERNATIONAL CORRESPONDENT
INTERNATIONAL CORRESPONDENTS**

Naomi R. Pollock, AIA
David Cohn, Claire Downey, Tracy Metz

**EDITORIAL DIRECTOR, DIGITAL MEDIA
WEB EDITOR
WEB DESIGN DIRECTOR
WEB PRODUCTION**

Bryant Rousseau, bryant_rousseau@mcgraw-hill.com
William Hanley, william_hanley@mcgraw-hill.com
Susannah Shepherd, susannah_shepherd@mcgraw-hill.com
Laurie Meisel, laurie_meisel@mcgraw-hill.com

ARCHITECTURAL RECORD: (ISSN 0003-858X) December 2008. Vol. 196, No. 12. Published monthly by The McGraw-Hill Companies, 1221 Avenue of the Americas, New York, N.Y. 10020. **FOUNDER:** James H. McGraw (1860-1948). Periodicals postage paid at New York, N.Y. and additional mailing offices. Canada Post International Publications Mail Product Sales Agreement No. 40012501. Return: undeliverable Canadian addresses to: DPGM Ltd., 2-7496 Bath Road, Mississauga, ON L4T 1L2. Email: arhcustserv@cdsfulfillment.com. Registered for GST as The McGraw-Hill Companies. GST No. R123075673. **POSTMASTER:** Please send address changes to ARCHITECTURAL RECORD, Fulfillment Manager, P.O. Box 5732, Harlan, IA 51553. **SUBSCRIPTION:** Rates are as follows: U.S. and Possessions \$70.30; Canada and Mexico \$79 (payment in U.S. currency, GST included); outside North America \$199 (air freight delivery). Single copy price \$9.95; for foreign \$11. Subscriber Services: 877/876-8093 (U.S. only); 515/237-3681 (outside the U.S.); fax: 712/755-7423. **SUBMISSIONS:** Every effort will be made to return material submitted for possible publication (if accompanied by stamped, self-addressed envelope), but the editors and the corporation will not be responsible for loss or damage. **SUBSCRIPTION LIST USAGE:** Advertisers may use our list to mail information to readers. To be excluded from such mailings, send a request to ARCHITECTURAL RECORD, Mailing List Manager, P.O. Box 555, Hightstown, N.J. 08520. **OFFICERS OF THE MCGRAW-HILL COMPANIES, INC.:** Harold W. McGraw III, Chairman, President and Chief Executive Officer; Kenneth M. Vittor, Executive Vice President and General Counsel; Robert J. Bahash, Executive Vice President and Chief Financial Officer; Elizabeth O'Melia, Senior Vice President, Treasury Operations. **COPYRIGHT AND REPRINTING:** Title ® reg. in U.S. Patent Office. Copyright © 2008 by The McGraw-Hill Companies. All rights reserved. Where necessary, permission is granted by the copyright owner for libraries and others registered with the Copyright Clearance Center (CCC), 222 Rosewood Drive, Danvers, Mass. 01923. To photocopy any article herein for personal or internal reference use only for the base fee of \$1.80 per copy of the article plus ten cents per page, send payment to CCC, ISSN 0003-858X. Copying for other than personal use or internal reference is prohibited without prior written permission. Write or fax requests (no telephone requests) to Copyright Permission Desk, ARCHITECTURAL RECORD, Two Penn Plaza, New York, N.Y. 10121-2298; fax 212/904-4256. For reprints call 800/360-5549 X 129 or e-mail architecturalrecord@theygsgroup.com. Information has been obtained by The McGraw-Hill Companies from sources believed to be reliable. However, because of the possibility of human or mechanical error by our sources, The McGraw-Hill Companies or ARCHITECTURAL RECORD does not guarantee the accuracy, adequacy, or completeness of any information and is not responsible for any errors or omissions therein or for the results to be obtained from the use of such information or for any damages resulting therefrom.

EDITORIAL OFFICES: 212/904-2594. Editorial fax: 212/904-4256. Email: rivy@mcgraw-hill.com. Two Penn Plaza, New York, N.Y. 10121-2298. **WEB SITE:** ArchitecturalRecord.com.



The McGraw-Hill Companies



Product: Mermet M Screen solar shading fabric
(other Mermet fabrics available)
Color: Charcoal/Mandarin (*shown*) plus 29 others
Openness Factor: 3% and 5%
Call toll-free 800.727.8953

HunterDouglasContract™

WINDOW COVERINGS

©2008 Hunter Douglas Inc. Enduris, Hunter Douglas and Hunter Douglas Contract are trademarks of Hunter Douglas Industries Switzerland GmbH

CIRCLE NO 146



Solarban® z50 proves you don't have to be green to be green.

New Solarban z50 solar control glass is a stylish, steely blue-gray glass that blocks up to 70% of total solar energy. That gives it a light to solar heat gain (LSG) ratio that's up to 30% better than that of competitive products. And that makes Solarban z50 a worthy addition to the Solarban family of solar control glass products – and a colorful step forward for sustainable design. For your free energy analysis white paper and glass sample, or to learn more about Ecological Building Solutions from PPG, call the PPG IdeaScapes hotline: 1-888-PPG-IDEA. Or visit www.ppgideascales.com.

Introducing Sloan's Solar Collection

Combining environmentally sound technologies with leading-edge electronics, the Sloan *SOLIS*® is designed to deliver continuous energy and water savings, while reducing operating and maintenance costs.

*Sloan SOLIS®
Dual-Flush
High-Efficiency
Toilet*

*Sloan SOLIS®
High-Efficiency
Urinal*

Sloan SOLIS® Faucet

The Sloan *SOLIS*® solar-powered collection is a breakthrough in design and function that transforms light into power. The Sloan *SOLIS*® Series of Flushometers and Faucets provides the ultimate in conservation and performance.



Generating Efficiency Through Technology

SLOAN®

866-663-2289
www.sloanvalve.com

Patent Pending

CIRCLE 20

GlasRoc[®]
EXTERIOR SHEATHING

ProRoc[®]
SPECIALTY GYPSUM BOARD

From the ground up.

Start with CertainTeed Gypsum: Specialty gypsum products for your commercial, institutional, and residential building needs.



SHAFTWALL SYSTEMS

For walls of elevator shafts and stairwells in multi-story buildings, CertainTeed Gypsum provides one-, two- or three-hour fire resistance ratings in non-load bearing configurations.
ProRoc[®] Shaftliner Type X for Shaftwall Systems.



AREA SEPARATION WALL

Area separation firewalls from CertainTeed Gypsum offers the advantages of fire resistance and noise attenuation between adjoining housing units.
ProRoc[®] Shaftliner Type X for Area Separation Firewall Systems.



GLASS MAT SHEATHING

Paperless, exterior sheathing panels with an innovative acrylic coating that resists moisture at the surface. Combined with patented, fully embedded glass mat technology, GlasRoc[®] can help protect the building during construction and bend to a tight radius for your design needs.
GlasRoc[®] Sheathing with Embedded Glass Reinforced Gypsum[™] Technology.



1-800-233-8990 www.certainteed.com/gypsum

CertainTeed 

Quality made certain. Satisfaction guaranteed.™

EXTERIOR: ROOFING • SIDING • WINDOWS • FENCE • RAILING • TRIM • DECKING • FOUNDATIONS • PIPE
INTERIOR: INSULATION • GYPSUM • CEILINGS

Critique

preferred the company of younger architects, he skipped the expected “their thinking keeps me youthful” folderol. I can still remember the steely look in Johnson’s eyes when he replied that, “For my own contemporaries [who included Louis

Clearly peeved by Rose’s frequent interpolations – which often come just as his guests are about to arrive at some long-awaited illumination – Johnson announced that he would take charge, and did so for the remainder of the program.

READING GOOD INTERVIEWS OFFERS A MILDLY ILLICIT THRILL AKIN TO THAT OF EAVESDROPPING ON A SPICY CONVERSATION.

Kahn and Wallace Harrison], I feel only envy or contempt, and they’re both very ugly emotions.”

Johnson had given so many interviews by the time Rauterberg finally got around to him that it’s no surprise their chit-chat sounds rather routine. But at least the German was spared Johnson’s usurpation of the interviewer’s role, as he once did with riveting audacity on *The Charlie Rose Show*.

Among the few who have since circumvented Rose’s interruptive urge as effectively as Johnson is Thom Mayne of Morphosis, though he prevailed through an altogether different technique. During my own interviews with Mayne, I have discovered that he can speak for an hour or even two virtually nonstop. Not all of what he says makes particular sense, but then there will come 3 or 4 minutes of utterly lucid

brilliance, when he suddenly brings together random threads of conversation and weaves them into a tight tapestry of seamless thought. Soon things begin to unravel again, and that rhythm repeats itself over and over until both parties have had enough and call it quits. Mayne’s manic modus operandi was on full view as Rose sat dumbfounded by his inability to wedge a single word in edgewise.

The imperative that practitioners explain themselves over and over again has its origins in two factors: the inherent social nature of architecture (which requires justification for a new building’s rightful place in the public realm), but more important, the fact that architects must sell themselves in order to get work. And the interview is the ideal format for that never-ending pitch.

Architects from Vitruvius onward have written about the building art with the same promotional goal in mind, and modern masters, led by Frank Lloyd Wright and Le

Corbusier, gave new impetus to the role of architect as self-publicist in print. But not every architect is a natural writer, and the interview can be a much more efficient method for putting one’s point of view across to the public in general, and potential clients in particular.

Talking Architecture made me think anew of a better example of the genre, *Conversations with Architects* (Praeger, 1973), by John W. Cook and Heinrich Klotz. These two books overlap by including dialogues with Johnson, as well as with Robert Venturi and Denise Scott Brown. Klotz’s long talk with Johnson has survived as a useful source for some of the architect’s more outrageous assertions, including his claim that he and his coprofessionals are whores because they work only for hire. Although he had already tossed off that cherry bomb at several lectures and conferences, it was a boon to posterity that he here committed his most notorious aperçu to print.



Alpolic/fr helps this
world-class performing
arts center truly dazzle.

Another gem buried in *Conversations with Architects* is Charles Moore's devastating little aside when asked if he would accept a commission for a private house from California's then-governor Ronald Reagan, who made Moore's life miserable when the architect served as dean at Berkeley. "Yes," Moore told Klotz. "Then I could put lead paint in the wall." Such flippancy aside, his remarks provide one of the most convincing records of Moore's political awareness, an aspect reflected in his designs for some of the last high-style public housing at the end of the Great Society, schemes no longer as familiar as his playful Pop high jinks.

The biggest surprises in *Talking Architecture* involve regrets expressed by architects often accused of indifference to humanist values. I.M. Pei, now in his 90s, sounds uncharacteristically rueful when he says of his buildings that "I'm really happy only with a handful.... I admit I don't have Breuer's



I.M. Pei: "Je ne regrette rien"?

warmth, they're probably too monumental for that. And that's a defect.... I never succeeded in getting the kind of thing that Louis Kahn, for example, achieved. But I didn't even want to."

Although Oscar Niemeyer (who will turn 101 on December 15) has been a lifelong Communist and

followed the Party line on social equality, critics have found his monumental capital city of Brasilia to be anything but hospitable to the needs of daily habitation. Now, apparently, Niemeyer feels the same: "If I could plan Brasilia all over again," he tells Rauterberg, "... there'd be extra apartment buildings and schools and shops. And I'd do without all the wide streets with all the cars. People would be able to walk everywhere."

No present-day architect is more disdained for allegedly sidestepping social issues than Rem Koolhaas, who has maintained that urban planners must take the world as they find it and not think they can reform it. But in *Talking Architecture* he sounds a very different note from such laissez-faire detachment, although whether or not his protestations are sincere one time will tell.

"These days everything is now decided by the last ideology we still have, the ideology of the market,"

says Koolhaas, who has been condemned for playing to those very market forces. "Fifteen years ago it was taken for granted that architects worked for public clients, i.e., their eye was on the public benefit. That social dimension of architecture has meantime almost disappeared, as the state has retreated.... Think of the fantastic new [housing] estates that J.J.P. Oud managed to build. He designed not just a few facades but also laid down how many schools, churches and shops were also needed in one area."

Reading good interviews offers a mildly illicit thrill akin to that of eavesdropping on a spicy conversation, just as reading books of famous figures' correspondence can give a frisson like opening other people's mail. As long as architects continue to speak, we will continue to listen, because the constructs they first sketch with words are the earliest evidence of the structures they bring to reality after all is said and done. ■

Incredible strength. Breathtaking beauty. What more could a landmark performing arts center ask for in a cladding material? Alpolic is a true show-stopper, offering precisely the lightness, flexibility, stunning finish, durability and fire code compliance that this challenging role demanded. Once again, Alpolic/fr has delivered the kind of performance that has lovers of great architecture around the world applauding. And one more thing about this performer, Alpolic/fr is now manufactured in the United States. FOR MORE INFORMATION, CALL 1-800-422-7270 OR VISIT WWW.ALPOLIC-NORTHAMERICA.COM



PROJECT: NATIONAL CENTER FOR PERFORMING ARTS, BEIJING, CHINA
ARCHITECT: PAUL ANDREU ARCHITECT, PARIS
FABRICATOR/INSTALLER: KING GLASS ENGINEERING GROUP
PRODUCT: ALPOLIC/fr, TITANIUM (TCM)
SYSTEM DESIGN: KING GLASS ENGINEERING



PHOTOGRAPHY: TSUYOSHI ONISHI

ALPOLIC[®]
MATERIALS

Mitsubishi Chemical FP America, Inc.

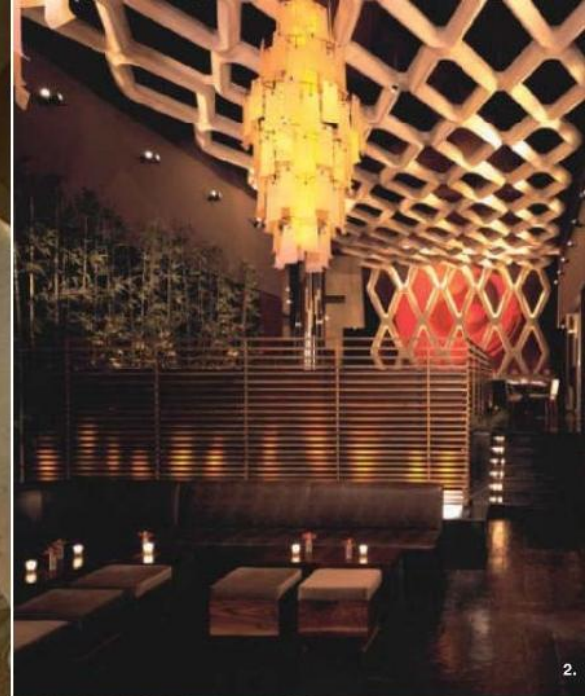
©2008 Mitsubishi Chemical FP America, Inc. All Rights Reserved



"USGBC" and related logo is a trademark owned by the U.S. Green Building Council and is used by permission. Mitsubishi Chemical FP America, Inc. is a member of the U.S. Green Building Council and actively supports environmental responsibility.

CIRCLE 24

innovation · style · performance



Photos: 1. National Civil War Museum, QuarryCast® columns & GRG radial trim, Hayes Large Architects 2. Koi Restaurant, GRG fishnet screen, ICrave Designs 3. Wynn Spa, QuarryCast® walls, Wynn Design & Development

Bring your design vision to reality.

Shapes. Textures. Finishes. The possibilities are endless.

Custom molded architectural shapes by Formglas are made of lightweight and durable GRG or GFRC, and are specified more often than any other products of their kind. Our team of architecturally trained professionals will provide the solution to your next design challenge.

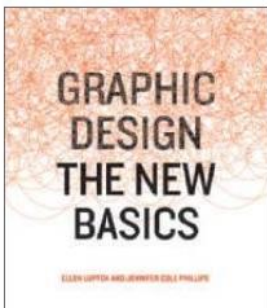
Formglas
Shaping Possibilities

T. 416.635.8030 www.shapingpossibilities.com info8@formglas.com

Learning from designers who aren't architects

Books

Graphic Design: The New Basics, by Ellen Lupton and Jennifer Cole Phillips. New York: Princeton Architectural Press, 2008, 248 pages, \$50.



For the past two decades, design educators have challenged, if not rejected, the Modernist idea that there are fixed and universal design fundamentals. It was undermined first by Postmodernism, then by critical theory, and finally by the emergence of digital technologies. But in the absence of a Bauhaus-like discipline of abstraction, the new software's myriad opportunities for manipulating images left two-dimensional design basics adrift in a sea of cut, paste, and shuffle.

In 2005, Ellen Lupton and Jennifer Cole Phillips, graphic design instructors at the Maryland Institute College of Art, decided to address the situation. They once again made form the focus of the first-year design curriculum and resurrected the Bauhaus, viewing it through a contemporary filter. Instead of a universal visual language, they proposed a "common ground of visual principles that connects designers across history and around the globe." This book

presents and refines what they learned teaching within this framework. Its chapters have familiar titles, such as "Point, Line, Plane," "Scale," and "Figure/Ground," but are richly illustrated with innovative work, mostly by students, that strongly validates the continued relevance of a Bauhaus model for the digital age. It is most certainly not your grandfather's Bauhaus, but Johannes Itten et al are surely somewhere smiling in approval.

Graphic Design: The New Basics is the essential new text for the fundamentals of graphic design education. It should become essential reading for architects as well. *John A. Loomis*

Seventy-nine Short Essays on Design, by Michael Bierut. New York: Princeton Architectural Press, 2007, 272 pages, \$25.



Incredibly, there are no illustrations, just words in this collection from Michael Bierut's blog, *DesignObserver.com*. The only concession to the visual is the annoying conceit of employing 79 different typefaces. Beyond that, Bierut's book is a delightful com-

pendium of observation and common sense, both wise and funny.

The great thing about graphic design, the noted image maven declares, "is that it is always about something else." In addressing his life in design, he is also talking about architecture ("the more things you are interested in, the better your work will be"). In discussing an "essentially value-free" modern design education, he laments the lack of cultural context and a troubling broader illiteracy.

Bierut, who did the graphics for Celebration, Florida, tells illuminating tales of the student paid \$35 to create Nike's swoosh logo and of Thomas Watson ("Good design is good business"), who hired Eliot Noyes, Charles and Ray Eames, Eero Saarinen, and Paul Rand to transform IBM.

But he aims his sharpest arrows at architecture and architects. He recalls being dumbfounded when asked to design a poster for a conference called "Non-Standard Structures: An Organic Order of Irregular Geometries, Hybrid Members, and Chaotic Assemblies." Hence, his delight in the uncool Josef Albers ("I paint the way I spread butter on pumpernickel") rather than the out-of-scale personalities of the black-T-shirt-and-square-glasses gang ("Marxists at a pajama party"). Yet he knows it takes real "personal magnetism to make a bunch of suspicious people give you a lot of money to remake the world." He admonishes that we'd all be better off "if we spent less time worrying about the spot-

light and more time worrying about all those people out there in the dark." *William Morgan*

Designing Design, by Kenya Hara. Baden, Switzerland: Lars Muller Publishers, 2007, 467 pages, \$50.



The work of Japanese designer Kenya Hara has little to do with architecture per se – and even less to do with today's frenetic search for easily defined trends. Whether curating an exhibition on the redesign of daily objects (why not a tea bag shaped like a marionette?) or crafting snowlike puffy paper for the 1998 Nagano Winter Olympic programs, Hara's goal is a tactile clarity that can make routine moments shimmer and unfold.

"Creation of novel things is not the only creativity," Hara writes in *Designing Design*, a gorgeously spare book that's part manifesto and part monograph. "The sensibility that allows one to rediscover the unknown in the familiar is equally creative." This quest to distill design to its essence includes a preference for the color white that makes Richard Meier look like a Day-Glo groupie: Consider such proclamations as "white is a color from which

Books

color has escaped," or "white has risen from chaos and is the original form of life and information."

The weakest part of *Designing Design* comes when Hara lavishes 71 pages on his marketing campaigns for Muji, the Japanese retailer known for its "no-brand" aesthetic; it's advertising, nothing more. What shines elsewhere is the notion that the everyday can be charged with insight and grace. Hara's message connects with the architects who have contributed to his exhibitions – we're shown such whims as Kengo Kuma's paper towels embossed with ghostly snakeskin patterns and Toyo Ito's squishy gel doorknobs.

It's a worldview in which design isn't about grand gestures so much as the subtle satisfactions of stillness and touch. Hara's perspective resonates beyond the borders of his Japanese homeland and should register with architects as well as graphic designers. *John King*

Design and Art, edited by Alex Coles. Cambridge: The MIT Press, 2007, 208 pages, \$23.



Only two architects and one architectural historian are among the 41 writers contributing to this anthology of brief articles and interviews about the intertwined relationship between contemporary art and design. Yet this engrossing jumble of insights from mainly artists, industrial designers, and art critics deserves attention from any architect seeking inspiration from offbeat interdisciplinary investigations.

Endemic to this type of publication focusing on blurred boundaries

among disciplines – in this instance, the dissolving lines between art, architecture, and graphic and product design – is a certain amount of wild speculation. The London-based art critic Alex Coles has bravely attempted to order the book's varied ruminations into broad categories: Paradigms, Utopias and Collectives, and Coordinators. It's probably best to ignore these categories and read randomly. Doing so offers some tremendously useful jolts to ordinary habits of architectural thinking.

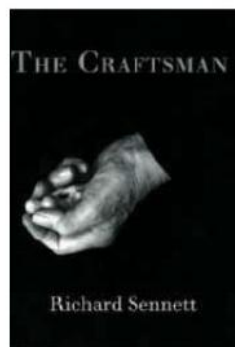
Since architects are trained to think of design as a calculated, client-driven process to meet clear objectives, the notion of the architect as designer and artist has often been limited to "star" architects with protean personalities. The most bracingly provocative pieces in this book – those by architect/designer Charles Eames, furniture-maker Norman Potter, designer Kees Dorst, and architectural historian Mark Wigley – raise pertinent questions about whether anyone's architecture is ever less than a design process culminating in an artwork. The traditional notion of design as more commercially fettered than art is expertly ransacked by numerous writers. And the examples of architects who gloried in artfully designing objects (from teaspoons to cities) are thoughtfully analyzed.

In spite of some glib posturing by Andy Warhol, and some foggy forays by lesser-known figures into art-babble, this is a lively, intellectually vertiginous anthology opening vistas to architects who might wish to rethink their identity as designer-artists. *Norman Weinstein*

The Craftsman, by Richard Sennett. New Haven: Yale University Press, 2008, 336 pages, \$28.

In this critical inquiry into intellectual or creative process, the sociologist Richard Sennett defines the craftsman by an ability to adapt and improvise. Drawing on anecdotal

evidence from a range of disciplines, Sennett explores the nature and ingredients of craftwork – crude tools, sophisticated machines, tradition, community, and the transmission of knowledge – and he arrives at a surprisingly simple thesis about the way we work. Craft mastery, he



concludes, is a state of continuous refinement. Each achievement in the process of making presents another problem to be solved, and so on.

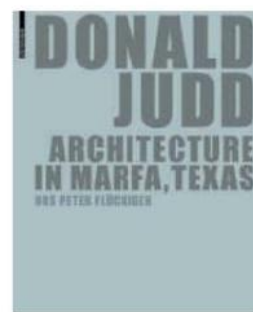
In a recent interview, Sennett likened this process to technique and outcome in music. The clarinetist, upon reaching the desired tone, realizes that her fingering is sloppy and sets out to correct it, thereby encountering a new problem with the tone. In another example, he describes the tendency of British nurses in the National Health Service to be naturally curious about the seemingly idle prattle of elderly patients who, if you listen long enough, often reveal very serious issues. Nursing, a craft like any other for Sennett, is defined by both problem-solving and problem-finding. For him, craftsmanship, as the evidence of craftwork, can exist in any discipline.

In architecture, he writes, Aldo Van Eyck, John Ruskin, and the CAD jockey all reveal some aspect of craft production's alchemy. He writes that the artistic craftsman is attuned to material, methods, and a characteristic rhythm that separates process from repetition and making from merely doing. *William Richards*

Donald Judd Architecture in Marfa, Texas, by Urs Peter Flückiger. Basel: Birkhäuser Verlag AG, 2007, 150 pages, \$45.

In southwest Texas, a remote, dry, and dusty land where the distant Chinati Mountains contrast with stark flatness, the sculptor Donald Judd saw beauty and possibility. In 1979, he began construction on a complex at Marfa, blending art, architecture, landscape architecture, and furniture design. Thinking like an architect, albeit without the training and license, he transformed a rundown conglomeration of Main Street buildings and military structures, the former Fort D.A. Russell, into a model of adaptive reuse.

An old bank became Judd's architectural studio, and he transformed airplane hangars, ware-



houses, offices, and homes, often linked by courtyards and walls, into a library, studios, a compound for his family, and art galleries.

Judd's complex includes artworks by Dan Flavin and Frank Stella plus prints by Matisse and Josef Albers. A former office and warehouse is dedicated to the twisted metal sculpture of John Chamberlain, and Richard Long's *Sea Lava Circles*, meshing landscape architecture and art, sits on an old tennis court.

Judd used his own designs to furnish interior spaces. He also placed Modernist furnishings by Schindler, Aalto, Rietveld, and Mies throughout the complex, as well as his collection of Swedish furnishings and pieces by Stickley.

Photographs throughout the book convey the influence of light on mass and form – Minimalist art, architecture, and landscape – Judd's primary thesis. In this fascinating book, drawings by the author and his students at the College of Architecture at Texas Tech clarify the artist's conceptual thought process. *Barbara Karth*



washroom chic?

Not your style? –
Choose from 77 other
towel dispensers.

ASI gives you more
choices than the other
leading brand.

www.americanspecialties.com



**MAKING MORE OF COMMERCIAL
WASHROOM ACCESSORIES**

American Specialties, Inc.



Water Planet San Francisco

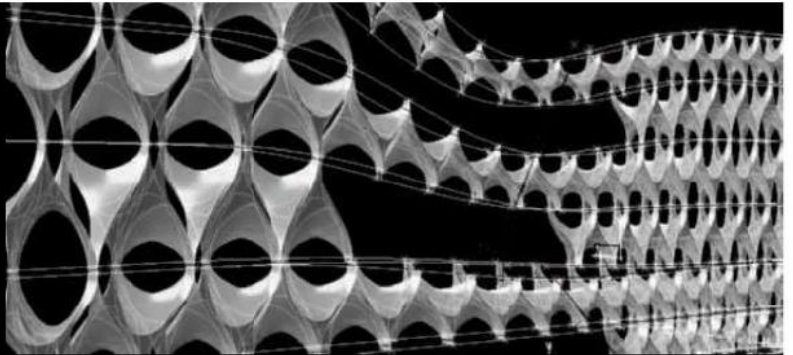
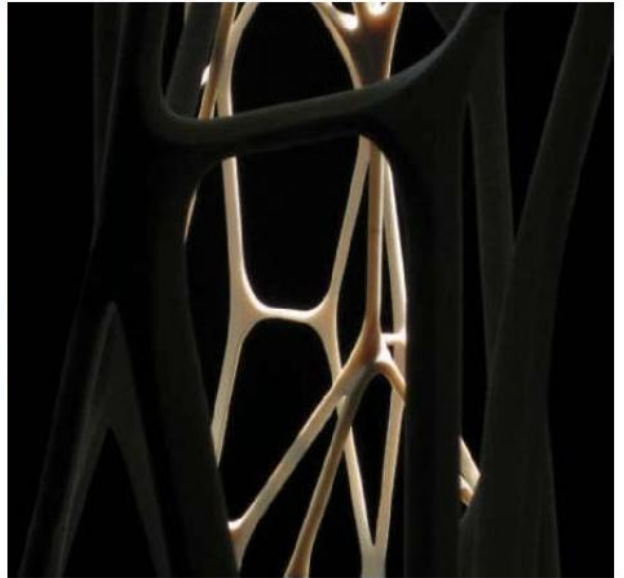
For a permanent multimedia installation at the Steinhart Aquarium in the recently opened California Academy of Sciences in San Francisco, A&O, along with collaborator Thinc Design, wrapped tanks with wavelike walls and created fluidly shaped interactive "islands." Fabricated from fiberglass, the flowing and creased forms were parametrically modeled with CATIA-based software.



Cairo Tower
New York City



As part of the New Practices New York 2008 competition sponsored by the local chapter of the AIA, A&O fabricated a delicate 19-foot-tall structure using 3D printing technology. The filigree-like object is made up of variously scaled, twisted, and nested hexagons. The architects printed the tower in 15-inch sections and spliced the pieces together with complex but ultimately invisible joints.



Bone Wall
New York City

Exhibited at New York City's Storefront for Art and Architecture, the 6-foot-tall and 14-foot-long Bone Wall is an undulating screen CNC milled from high-density foam. It is composed of 72 rotated and stretched parametrically linked cells. A&O's goals for the project were to explore surface and the play of light, in addition to incorporating programmatic elements such as seating.





Johnson & Johnson Olympic Games Pavilion
Beijing

This 25,000-square-foot exhibition pavilion for Johnson & Johnson at the 2008 Olympic Games is A&O's first freestanding building. Outside the fritted-glass-enclosed structure, a water garden and bamboo grove create a cool microclimate. The architects also brought the bamboo inside, connecting the building with its grounds. By way of an interior ramp, visitors travel through exhibits designed by A&O collaborator Thinc.



PHOTOGRAPHY: © STEFAN HAGEN (OPPOSITE, MIDDLE LEFT); COURTESY URBAN A&O (OPPOSITE, TOP RIGHT);



KUEHN MALVEZZI

finds the art in making more with less

By Leslie Yudell

Architect: Kuehn Malvezzi

Location: Berlin, Germany

Founded: 2001

Design staff: 12

Principals: Johannes Kuehn, Simona Malvezzi, Wilfried Kuehn

Education: Johannes Kuehn: Technische Universität Berlin, M.Arch., 1998; Universidade do Porto, Portugal, 1993-94; Malvezzi: Politecnico di Milano, Italy, M.Arch., 1994; Wilfried Kuehn: Politecnico di Milano, M.Arch., 1995; Universidade de Lisboa, Portugal, 1991-92

Work history: Johannes Kuehn: DKV Architecten, Rotterdam, the Netherlands, 1998-2000; Malvezzi: Hubmann&Vass, Vienna, 1998-2000; Berni-Leroy, Milan, 1995-97; Wilfried Kuehn: Adolf Krischanitz, Vienna, 1995-2000; Academic – Professor of Exhibition Design and Curatorial Practice, Karlsruhe University of Arts and Design, Karlsruhe, Germany, 2006-present

Key completed projects: Liebieghaus Sculpture Collection, Frankfurt, 2008; Lower Belvedere, Vienna, 2007; Galerie Neugerriemenschneider, Berlin, 2007; Julia Stoschek Collection, Düsseldorf, 2007; Mode Muehlbauer, Vienna, 2007; House in Vienna, 2006; Friedrich Christian Flick Collection, Berlin, 2004; Lauder Business School, Vienna, 2004; House in Berlin, 2004; Berlinische Galerie, Berlin, 2004; Galleria Gió Marconi, Milan, 2003; Galerie Vera Munro, Hamburg, 2003; Documenta 11, Kassel, Germany, 2002; Pavilion, Braunschweig, Germany, 2002

Key current projects: Health Center Wetzlgut hotel, Bad Gastein, Austria, 2008; Cap Vermell Estate, Majorca, 2009; MICAMOCA Berlin, 2010; Museum of Decorative Arts Berlin, 2010; Museum Berggruen, Berlin, 2011

Web site: www.kuehnmalvezzi.com/



Visitors get the red-carpet treatment at a theater festival in Braunschweig.

When the architects at Kuehn Malvezzi put on a show, they don't make a spectacle of themselves. The Berlin-based firm—founded in 2001 by German brothers Wilfried and Johannes Kuehn, and an Italian, Simona Malvezzi—has gained a reputation for deft, elegant art installations that focus not just on the display of objects but on the encounter between artworks and viewers that informs it. To shape this exchange, the team concentrates on modeling space, not crafting enclosures. “We design from the inside out, not the outside in,” Wilfried Kuehn notes. “It’s not about ‘big’ architecture,” he adds, or projecting a signature style, but establishing connections between things by the simplest, unmediated means.

The team works closely with artists and curators on exhibition projects. In 2002, they won a competition to convert a 64,600-square-foot former brewery building into an exhibition venue for the Documenta 11 art show in Kassel, Germany. The winning scheme successfully addressed the curatorial vision of Okwui Enwezor, the director of the show—which embraced diverse cultures and broad political and social themes—as “constellations” of individual artists’ works, not juxtapositions of single works by different artists. The architects configured the huge interior as a matrix of flexible, varied-size spaces, planned like a city, which gave visitors a choice of routes through the galleries: either “en suite,” as in a maze, or by “shortcuts,” targeting particular installations. To keep access to all the galleries open, the team devised an acoustical barrier embedded in the walls that allowed audible works to be placed near silent ones without closing off any areas.

Following its success at Kassel, the firm won the competition for an extension of Berlin’s Hamburger Bahnhof museum, to exhibit, over seven years, the private Friedrich Christian Flick Collection of contemporary art. The annex, comprising eight linked galleries within a two-story former freight warehouse behind the museum, opened in 2004. Entered from the main building via a concrete bridge, the extension’s original steel and red-brick structure was covered with new, corrugated-metal cladding enclosing a former loading ramp, now an interior corridor. Although the building opened amid controversy over the role of the Flick family in World War II, it has been so well received that the plan to raze it for residential and office development is being reviewed; it may spawn a new art district instead.

Wilfried Kuehn and Malvezzi’s training in Italy focused on the study of architectural typologies as a basis for invention, and the firm’s work reflects a keen awareness of historic precedents. The Kuehn brothers also studied in Portugal, where the emphasis was on the impact of context on design. Like the team’s later projects, an early scheme for the entrance pavilion of a theater festival combines both approaches. Instead of a separate structure, they appended a staircase swathed in red carpet to the facade of the main theater, using its upper-level ballroom, usually inaccessible to the public, as the festival entrance hall. The scheme democratized the Baroque staircase, associated with privilege, by moving it to the street as open access to the building’s private quarters and as bleachers overlooking the city. On display like a public artwork visible from afar, it also served as an apt logo for the event, linking it to the town’s historic center. ■



**Julia Stoschek
Collection**
Düsseldorf

This combined public gallery and private residence for a contemporary-art collector is set within the shell of a landmark 1907 former factory building. The spacious interior ascends from exhibition areas on the lower floors to a two-level aerie suspended beneath a light-filled, 40-foot-high attic, culminating in a roof terrace for additional art display. A glazed lantern inserted in the roof where the original factory sign stood signals the building's new identity.

Berlinische Galerie Berlin

When Berlin's Museum of Modern Art, Photography, and Architecture moved to expanded quarters, it held a competition to redesign the building's facade. Instead, aiming to connect the cultural center to a neighborhood of low-income housing, Kuehn Malvezzi's winning proposal was for a new forecourt. A bright field of black letters on a yellow ground, spelling out the names of artists in the collection, serves as a banner for the gallery while forming a lively plaza and welcome playground for local residents.



Mode Muehlbauer Vienna

A family-owned Viennese millinery firm recently opened a clothing shop across the street from its flagship headwear store in the center of the city. The company, admiring Kuehn Malvezzi's art installations, had hired the firm to design its flagship store and sought it out again to create the new shop. To accommodate a two-level space with a very small ground floor and a basement five times its size, the architects placed the merchandise on the lower level and left the entrance just for window displays. A grand rosewood staircase beckons shoppers to the lower level, seen from the street in a mirror that presages and magnifies the space.



House in Vienna Vienna

To fit a house onto a narrow hillside lot, the firm drew on Adolf Loos's *raumplan*, which gives the interior of the six-level dwelling an expansive, horizontal feeling in spite of its steeply vertical site. Laid out like platforms, or terraces, separated by a few steps, the floors are arranged in a continuous spiral, staggered laterally through the building rather than stacked on top of each other. The architects opened up the traditionally inner-oriented plan to light and views with generous glazing. The alternating floor levels put windows and furnishings in surprising perspective, transforming the residence into a gallery of remarkable images.



PHOTOGRAPHY: © ALBERTO FONSECA (BOTTOM LEFT); JUAN PABLO ORDÓÑEZ (TOP RIGHT); DANIEL BONILLA (BOTTOM RIGHT)

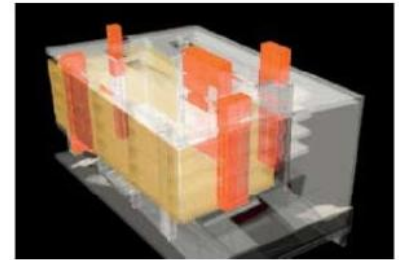
Vallecas Madrid

This competition entry, which Bonilla submitted with Spanish architect Carlos Arroyo, proposes a design for social housing incorporated into the Madrid Ensanche, or grid-plan neighborhoods. The challenge was to invigorate an urban environment through a prosaic corner site. While the floor plans of the eight-story, stone-clad building's 45 units are identical, each apartment's unique fenestration lends the individual interior spaces a distinct character.



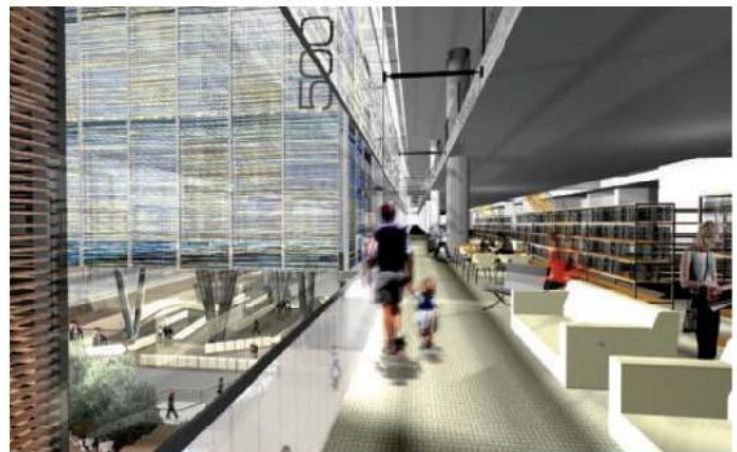
**Bogotá Chamber
of Commerce
Building**
Bogotá

Slated for completion in 2009, this building comprises a wood-screened box shielded by a granite frame, and illustrates Bonilla's interest in how architecture can relate to the city. By introducing a sloped topography to the flat site, he created two "ground floors," where the street leads into the building. Breaking up the required square footage for the main level also enabled Bonilla to free up space for a large ramp that functions as a public terrace.



**National Library,
Jose Vasconcelos**
Mexico City

Bonilla collaborated with architects Isaac Broid and Giancarlo Mazzanti on this competition entry (a finalist) for a new central public library in Mexico City. To break down the scale of what would be the country's largest library, the architects created a series of small libraries within the large building. A single onyx-and-glass volume contains three pairs of boxes – each housing a particular collection – which are separated by courtyards.



PHOTOGRAPHY: © ANDRÉS ARENAS (OPPOSITE)



**Julio Mario
Santodomingo
Building**
Bogotá

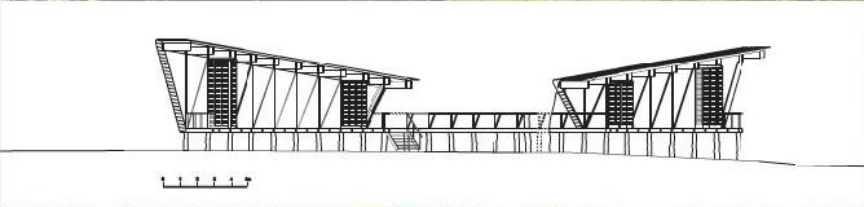
This 268,000-square-foot building combines graduate classrooms and offices for the Universidad de Los Andes, with parking on the seven lower levels, and a restaurant, library, and terraces on the top floor. The east and west elevations are faced in translucent laminated glass with aluminum louvers over the apertures, while the north and south sides are clad with aluminum paneling. Inside, woven timber slats allude to Colombia's basket-weaving tradition.



Casa Kiké

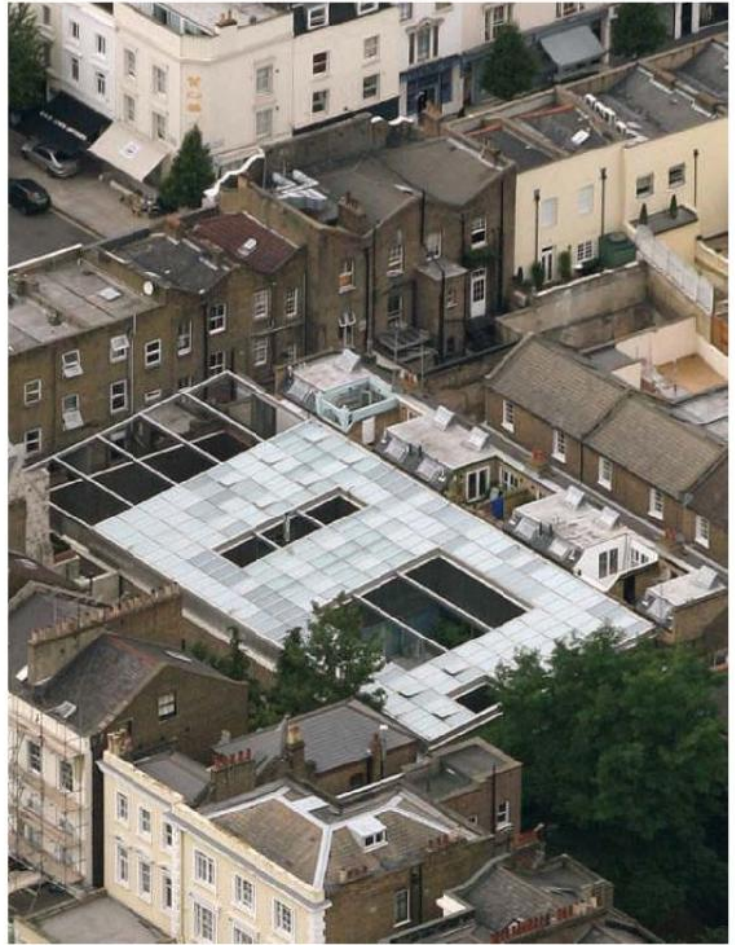
Cahuita, Costa Rica

Constructed in corrugated steel and local timber using indigenous building methods, a writer's compound near the sea comprises two small pavilions connected by a walkway that divides studio and sleeping areas. Designed to maximize views and airflow, the structures are raised off the ground by wood stilts on concrete foundations. Insulated interiors are naturally vented by louvered glass end facades. The sum is a building that blends into its surroundings.



Light House London

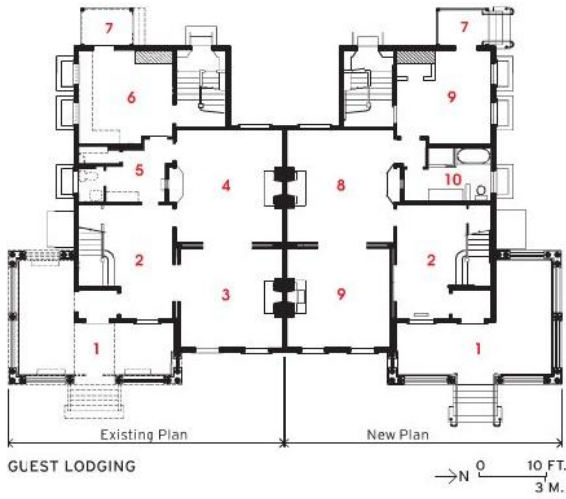
The key challenge of this constrained London home for a family of four was to maintain privacy while optimizing daylight. The concrete structure has a glass roof made of fritted, solar-control glazing with operable sections to circulate breezes. Open light wells create inner gardens and terraces bringing the outdoors into this private urban environment, which features bedrooms, baths, and a stainless-steel lap pool on the ground floor, and living areas above.



Prototype Sales Center Persian Gulf

Planned as a prototype for a series of showcases for a Gulf-based developer, this 30,000-square-foot building will include a full-scale model apartment, exhibition area, café, and offices. Botsford designed the project as a self-shading form constructed in exposed precast concrete, keeping in mind the need to adapt the scheme from location to location and use a number of repetitive features.

IMAGES: VIZAVIZ (BOTTOM TWO); PHOTOGRAPHY: © HÉLÈNE BINET (TOP THREE); EDMUND SUMNER (OPPOSITE)



1. Porch
2. Entry
3. Living room
4. Dining room
5. Pantry
6. Kitchen
7. Back porch
8. Sitting room
9. Bedroom
10. Bath



The restored officers' quarters (above) yielded 68 units, with little change needed to convert old spaces to

new ones (plan, left). The main dining room (below) retains its original pressed-tin ceiling and cast-iron columns.



Cars are stowed in small lots at the rear of the main buildings while electrically run carts shuttle hotel guests around. ARG converted a barracks to a dining facility (right), reinstalling two levels of porches removed in the 1950s. It kept the original moldings and sashes, for a bar (below) and the vestibule (bottom).



possible with the Environmental Impact Statement. Needless to say, it went over well with the surrounding community, which feared that a new lodge would chase away wildlife, change the character of the place, and add to the traffic congestion.

The plan called for ARG converting 21 original buildings to hotel uses. Thirteen of the historic buildings, replete with pressed-tin ceilings, wood floors, fireplaces, wood-sash windows, and porches, were to be turned into lodgings with one- or two-bedroom units, and in some cases single rooms. The various accommodations would range from 317 to 1,336 square feet.

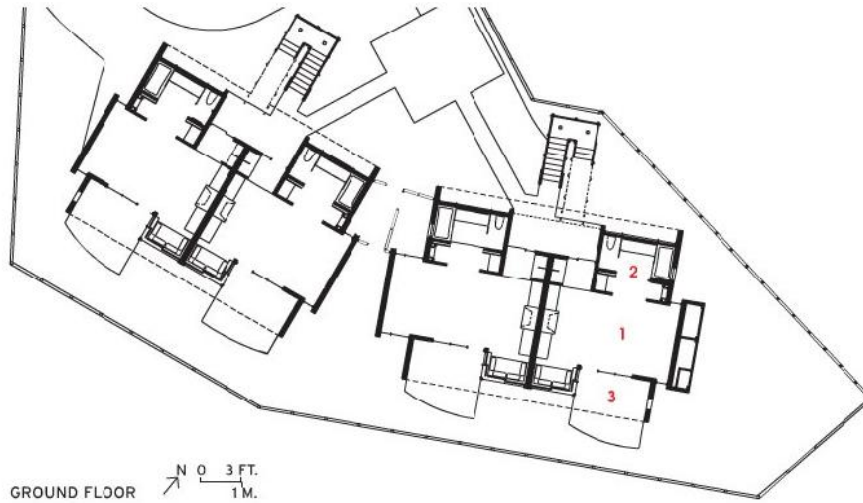
Dominating the Parade Grounds are two large wood-frame structures, originally built as barracks. One, a 16,333-square-foot structure, would be devoted to hotel reception, a retail shop, and meeting spaces; the other, an 18,900-square-foot building, would contain the restaurant, bar, banquet rooms, and kitchen.

In addition, a chapel, built in 1941 with an early version of glue-laminated beams, was to be restored for various events, while a brick building, once housing the army's gym and Postal Exchange, would be renovated for conference use.

Any new construction had to occur on the footprints of nonhistoric buildings that were torn down. In this case, architects Leddy Maytum Stacy designed 13 two-story lodging units with 74 guest rooms, plus a new spa building. The



- 1. Bedroom
- 2. Bath
- 3. Balcony



In the new guest rooms, orientations to the bay (below left) are enhanced by balconies and window seats. Ceilings varying from 9- to 14-foot heights add to the drama. Clerestories in the bath (below right) offer glimpses of the mountains. The new lodgings (bottom) sit on a slope with panoramic views of the bridge.



team went after LEED certification for the entire complex, incorporating energy-efficient features for heating, cooling, and lighting, and using recycled materials, solar panels, and electric cars.

Solution

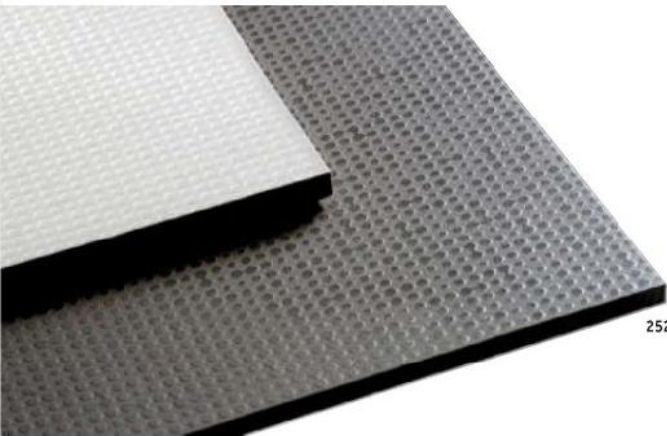
With the historic structures, ARG kept the building shells, plus about 75 percent of the interior walls and floors, while removing nonhistoric additions and partitions where needed. ARG removed the original tin ceilings and stripped them of chipped paint by freezing. In reinstalling them, the architects built an acoustical separation space between the floors containing batt insulation, resilient channels, and plywood.

Only fans and operable windows cool the lodgings, although air-conditioning is provided in the main buildings' dining and event spaces. Hydronic heating is supplied through radiators in the houses, and the original fireplaces are fitted with natural-gas-flame sources.

In designing the 13 new lodging structures and spa, Leddy Maytum Stacy wanted to avoid imitating the white clapboard, turn-of-the-20th-century look of the historic houses. While still using a wood-frame structure, it adhered to a Modernist vocabulary with plaster surfaces (for fire codes) and natural colors. The new lodgings are topped with painted standing-seam steel roofs fitted with thin-film solar panels. The spacious high-ceilinged interiors are



“The new drywall products are important in terms of pioneering sustainable substitutes for traditional drywall.” JANE STAGEBERG, AIA



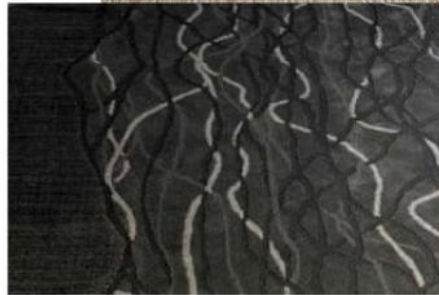
252



254



253



255



Pixel perfect The dotted surface of Pixel from Fioranese evokes a pixelated computer image, or a large-scale mosaic. In addition to base tiles in neutral colors, the decorative Pixel Macro tile is available in lilac. Italian Trade Commission, Ceramic Tile Dept., New York City. www.italytile.com

CIRCLE 252
In the shade Each 1'-square sheet of Marfil porcelain stoneware mosaic tile from Ceramiche Coem comprises 81 1"-square tiles. Despite their consistent dimensions, the mosaic components are netted to create deep textures that cast shadows in spotlight. Italian Trade Commission, Ceramic Tile Dept., New York City. www.italytile.com **CIRCLE 253**

Get a clue Essay of Clues (top), from Shaw Contract, is a Cradle to Cradle-certified collection of carpets designed in collaboration with William McDonough. Each carpet's component materials – Eco Solution Q premium nylon and EcoWorx tile or broadloom backing – includes recycled content and is completely recyclable. The patterns in A Texture Study (bottom) are based on a study of contrasts, such as techno and organic or sleek and rough. The collection includes nine broadloom and three tile patterns backed with EcoWorx. Shaw will collect all EcoWorx products at no additional cost and recycle them into new backing. Shaw Contract Group, Cartersville, Ga. www.shawcontractgroup.com

CIRCLE 254
Certify this This year, the Forest Stewardship Council certified Smith & Fong's bamboo forest resource, making the company's well-known Plyboo the first-ever FSC-certified bamboo plywood and flooring on the market. (See Top Ten Green Products, page 165.) The new products are also available in a urea-formaldehyde-free version known as PlybooPure. The low-resin plywood can be cut and sanded using conventional woodworking tools, and used for cabinetry, furniture, and other applications. Available through New York City-based Robin Reigi. Smith & Fong, San Francisco. www.plyboo.com

CIRCLE 255

Finishes

Gypsum board • Ceramic & stone tiling • Resilient flooring • Carpeting • Wall coverings • Bamboo flooring • Painting • Lime-based plastering

Metropolitan home In the Metropolitan series of porcelain stoneware tiles, a field tile that looks like smoothed cement is complemented by a series of decorative tiles accented in wooden edges, metal strips, and glass bands. Ragno USA, Sunnyvale, Tex. www.ragnousa.com **CIRCLE 256**

Swept away Italian artisan Giovanni Barbieri created the undulating Ambra pattern by hand-carving marble tile and then alternating polished and matte finishes, which assume different tones of color. Artistic Tile, New York City. www.artistictile.com **CIRCLE 257**

Fade to black Melding fine art and product design, the Black Flower series of porcelain tile from Viva Ceramica features photographer Massimo Gardone's black-and-white depictions of roses in full bloom. Designed in collaboration with Moroso creative director Patrizia Moroso and available in 39"-square and 19"-square sizes. Italian Trade Commission, Ceramic Tile Dept., New York City. www.italytile.com **CIRCLE 258**

All natural Besides scoring eco points for its all-natural ingredients, Marmoleum Composition Tile requires little maintenance: Its Topshield finish is occupancy-ready, and its natural anti-static properties repel dust and dirt. Forbo Flooring Systems, Hazleton, Pa. www.forboflooringna.com **CIRCLE 259**

Lath liberation Plastermax-IND (left) is an abuse-resistant, Greenguard-certified veneer plaster designed to be applied over conventional gypsum board, cement board, brick, or block substrates. Fillers include limestone and recycled glass up to 80 percent by volume. The interior veneer plaster Plastermax-ICF (right) is applied directly to insulating concrete foam blocks, without lath. The abrasion-resistant surface replaces drywall as a fire-rated barrier. The Greenguard-certified material contains 50 percent recycled content and does not support fungus, mold, or mildew. Gigacrete, Las Vegas. www.gigacrete.com **CIRCLE 260**



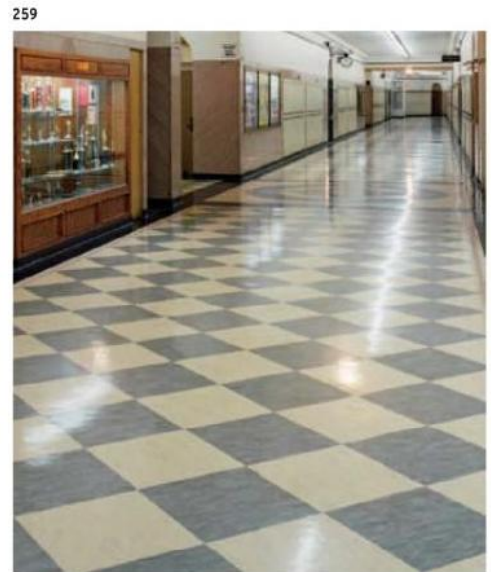
256



257



258

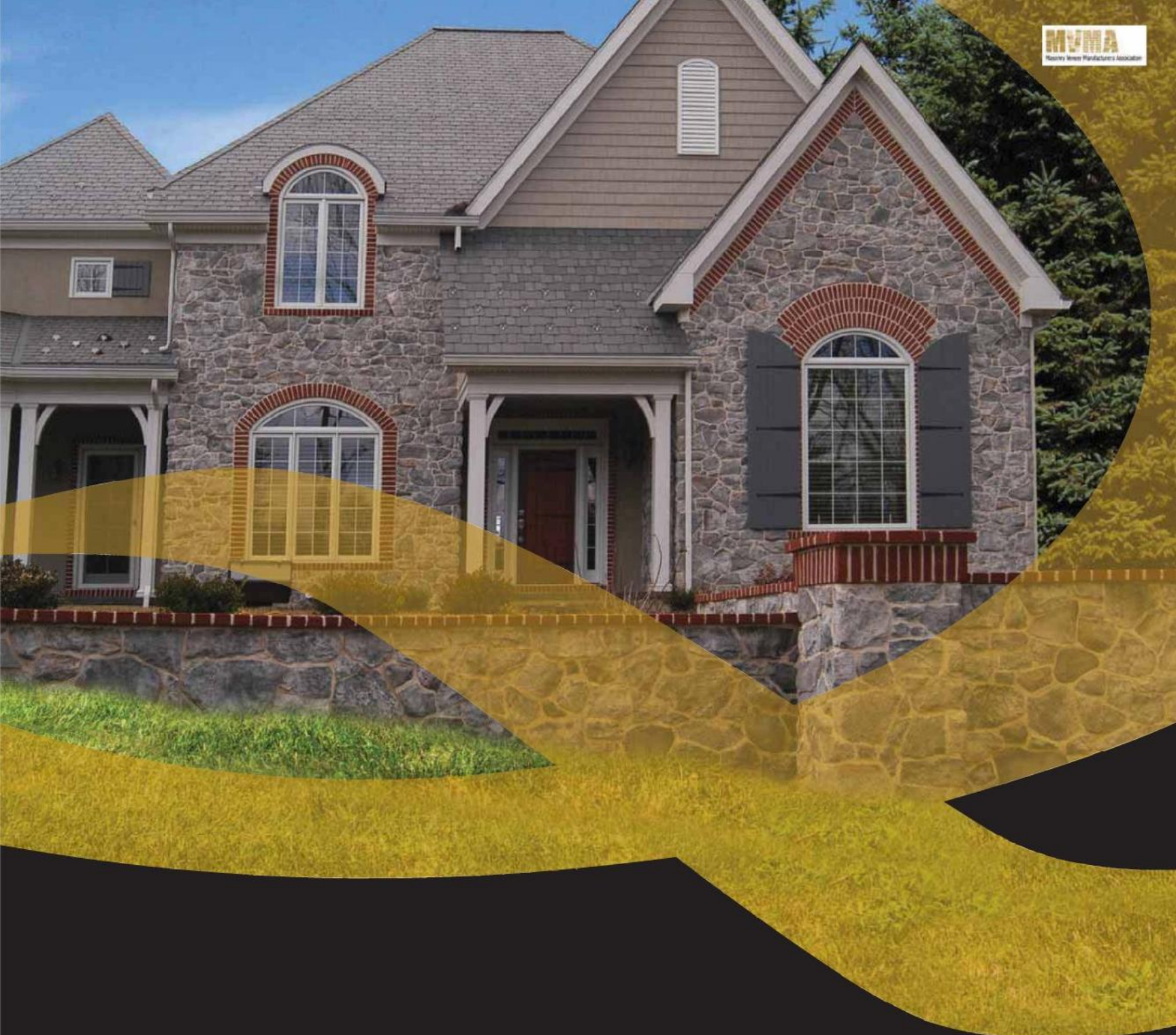


259



260





QUALITY FOR GENERATIONS

QUALITY STONE VENEER

1.800.795.3229

QualityStoneVeneer.com



Finishes

Gypsum board • Ceramic & stone tiling • Resilient flooring • Carpeting •
Waycoverings • Bamboo flooring • Painting • Lime based plastering



261



262



263



264

Dust might Mapei's new Dust-Free Technology reduces dust generation from Mapei products used on tile and stone installations by 90 percent. Mapei, Deerfield Beach, Fla. www.mapei.us/DustFree.htm **CIRCLI 261**

Strand together Synergy Strand Bamboo Floating Floor is manufactured in wheat, chestnut, java, and brindle hues with an eco-safe adhesive. Teragren, Bainbridge Island, Wash. www.teragren.com **CIRCLI 262**

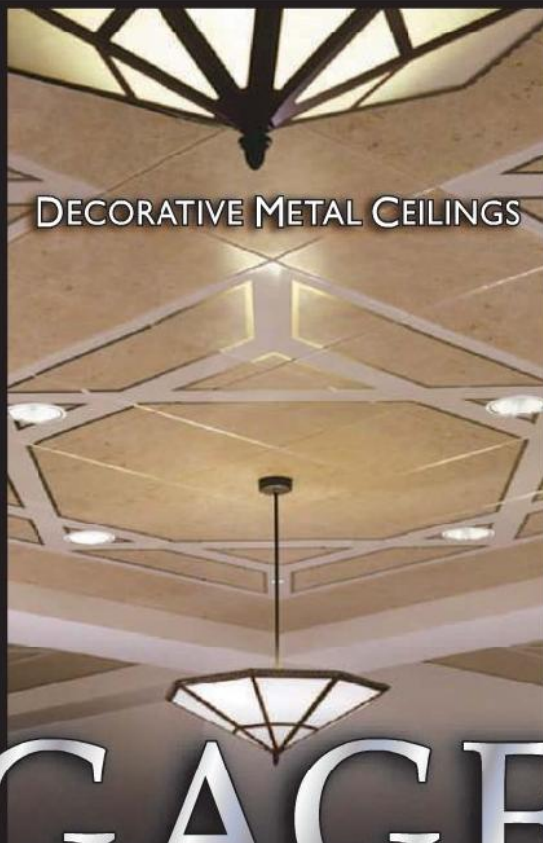
Waste not Fabricating EcoRock dryways uses 85 percent less energy than manufacturing gypsum drywall. The no-VOC material also comprises 85 percent post-industrial recycled content, and it is fully recyclable. Serious Materials, Sunnyvale, Calif. www.seriousmaterials.com **CIRCLI 263**

High and dry In addition to its low water absorption and resistance to mold, ProRoc Moisture and Mold Resistant Gypsum Board with M2Tech is distinguished by its recycled face and back papers and use of recycled gypsum. CertainTeed Gypsum, Tampa. www.certainteed.com/gypsum **CIRCLI 264**

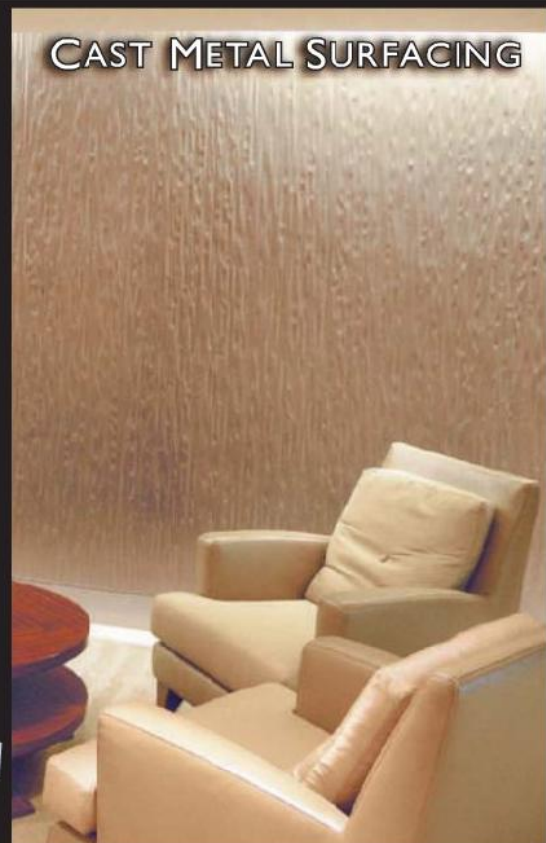
ARCHITECTURAL METAL



DECORATIVE METAL CEILINGS



CAST METAL SURFACING



608-269-7447
Sparta, WI 54656 USA

GAGE
ARCHITECTURAL PRODUCTS

■ THE POSSIBILITIES ARE ENDLESS. ■

CIRCLE 53
800-786-4243
www.gagecorp.net

HOW DO YOU MAKE A DESERT GREEN?

MASDAR CITY ABU DHABI, UNITED ARAB EMIRATES

The Masdar Initiative is adapting centuries' old sustainable design practices to engineer new innovations. The planned outcome is one of the world's first zero-carbon cities as well as a new economy that exports eco-technology.

© Foster + Partners/Courtesy Masdar.

an exhibition at the
NATIONAL BUILDING MUSEUM

Presenting Sponsor:



Lead Sponsor:



Official Media Partner:



Sustainability Partner:



GREEN COMMUNITY

OPEN FOR ONE FULL YEAR
OCTOBER 2008 – OCTOBER 2009



© Sophia Florestal

a lecture series at the

NATIONAL BUILDING MUSEUM

401 F Street NW Washington, DC 20001 | 202.272.2448 | www.NBM.org

for the **GREENERGOOD**

conversations that will change the world

Divorce Your Car

What will it take to get Americans out of their cars?
How can we design neighborhoods that are more walkable and encourage public transit?

Thursday, December 4, 2008

For the Greener Good lecture series is presented by The Home Depot Foundation.



The Beauty of Real Stone

www.nsvi.com 877-923-2800

Natural
stone
veneers
INTERNATIONAL INC

Timeless...

Natural Stone has a place in history where the past is always present.

CIRCLE 55

Stone Veneer shown on this page is a Canyon Creek.

Specialties & Equipment

Residential appliances • Health-care equipment • Unit kitchens •
Loading-dock equipment • Exterior sun control devices



Kitchen closet The b2 kitchen system includes a workbench that hosts cooking and plumbing equipment and a series of monolithic oak or walnut cabinets that open up to store tools, dry goods, and appliances. Bulthaup, New York City. www.bulthaup.com **CIRCLE 265**

Top tub The Ascenta dishwasher's washtub is made from stainless steel and a reinforced polypropylene base – a first in the U.S. and an exclusive to Bosch – that is more durable, food-proof, and colorfast than all-plastic versions. Bosch, Huntington Beach, Calif. www.boschappliances.com **CIRCLE 266**

Patient station The V3 Wall Station saves space in compact health-care environments, accommodates 99 percent of users in seated and standing positions, and boasts 75 percent recycled/95 percent recyclable content. Humanscale, New York City. www.humanscalehealthcare.com **CIRCLE 267**

Piece of art Developed by Unicel and Thomas Phifer and Partners, the exterior shading system for the North Carolina Museum of Art consists of curved aluminum blades that allow some light through while filtering exhibit-damaging UV rays. Unicel Architectural, Longueuil, Quebec. www.unicelarchitectural.com **CIRCLE 268**

Problem contained The Dock Retention Barrier holds back spills and fire water at loading docks that handle hazardous materials via a polyurethane- or PVC-sealed aluminum armature that clamps to an opening. Blobel Environmental Engineering, Wilmington, Del. www.blobel.us **CIRCLE 269**

Quick and quiet The G 2002 is engineered to be Miele's quietest dishwasher yet and offers a Turbo feature that speeds up wash programs by 10 to 15 percent. Miele, Princeton, N.J. www.miele.com **CIRCLE 270**

"Thomas Phifer's louvers for Unicel were among the best-looking products we looked at." DAN WOOD, AIA



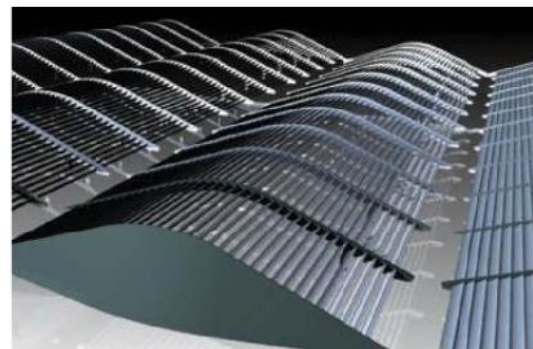
265



266



267



268



269



270

SAVE 24,665 GALLONS

If a household replaced its old toilets with TOTO® 1.28 gallon per flush High Efficiency Toilets (HETs), it would save 24,665 gallons of water a year.* That's a lot of water and a giant step forward in conserving one of our most precious natural resources. Other High Efficiency Toilets can sacrifice performance in an effort to save water, meaning that you have to flush more than once to get the job done—that's hardly efficient.

At TOTO, our engineers have perfected the art of the "single flush"—using less water with no compromise. Our advanced water technologies, responsible manufacturing processes and life enhancing products are our lasting contribution to a more sustainable planet.

We call this totology. It's our approach to everything we do. Learn more at whytology.com

totology



*Based on a household of 3.2 people and 16 flushes per day with 5.5 gpf toilets over the course of a year.

CIRCLE 59

TOTO®

Plumbing & HVAC

Domestic water-filtration equipment • Domestic water heaters • Residential & commercial plumbing fixtures • HVAC air distribution • Radiators

Quiet and efficient Operating via a motion sensor, Panasonic's WhisperGreen Ventilation Fan is Energy Star rated. It includes a light, and maintains noise levels below 0.3 sones. Panasonic, Secaucus, N.J. www.panasonic.com/building **CIRCLE 299**

Sunny forecast Notable for seamless integration with rooflines and the company's roof window, Velux Solar Water Heating Systems deliver up to 100 percent of a home's hot water with two to three rooftop collectors and 80- or 120-gallon holding tanks. Velux America, Fort Mill, S.C. www.veluxusa.com **CIRCLE 300**

Invisible tank The Geberit concealed tank and carrier system hides a toilet's functional apparatus so that the bowl appears to cantilever from the wall. Dual-flush technology offers water-saving potential. Geberit, Des Plaines, Ill. www.geberit.us **CIRCLE 301**



299



300



301

Easy to install. Fits any space. Matches any décor. With the Unico System's design flexibility, it is ideal for historical remodels and renovations. Unico's small-duct heating and cooling solution removes 30% more relative humidity than traditional systems without compromising the design and décor of your project.



Your comfort begins at www.unicosystem.com

The Unico System®
 Small-Duct Central Heating
 & Air Conditioning
 800-527-0896



The underlying comfort of Unico.

INTRODUCING THE NEW CRL PRECISION TAPER-LOC™ SYSTEM

PATENT PENDING

REVOLUTIONIZES THE PROCESS OF INSTALLING GLASS RAILING SYSTEMS

- PRECISION CONTROL DESIGNED FOR HIGH QUALITY INSTALLS EVERY TIME
- CLEAN (NO MESSY WET CEMENT)
- FOR USE ON RESIDENTIAL AND COMMERCIAL APPLICATIONS
- WORKS WITH 1/2" (12 MM) AND 3/4" (19 MM) TEMPERED GLASS



TAPER-LOC™ Installation/Removal Tool

**50%
FASTER**

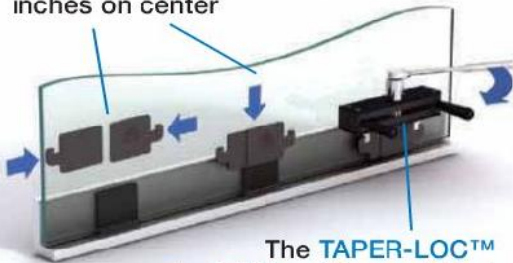
View the Installation Video Online at crlaurence.com

TAPER-LOC™

DRY GLAZE RAILING SYSTEM

BASE SHOE CUT-AWAY

TAPER-LOC™ Tapers insert into the Base Shoe every 14 inches on center



The TAPER-LOC™ Installation/Removal Tool compresses the Tapers together to lock the glass in place

C.R. Laurence Company introduces the innovative GRS Glass Railing Dry Glaze TAPER-LOC™ System designed for tempered glass railing applications.

This System includes the very easy and unique Installation/Removal Tool and CRL TAPER-LOC™ Tapers for 1/2" or 3/4" tempered glass applications.

The CRL TAPER-LOC™ System supports all mounting methods, and is designed to meet and exceed code standards.

ISO 9001:2000 Certified
CRL® C.R. LAURENCE COMPANY
crlaurence.com | Worldwide Supplier
Contact us by phone at (800) 421-6144, and ask for the Architectural/Railing Division at ext. 7730. Fax (800) 587-7501



Reader Service #	Advertiser	Page	Reader Service #	Advertiser	Page	Reader Service #	Advertiser	Page
63	Academy of Art University <i>academyart.edu</i>	212	22	Guardian SunGuard <i>sunguardglass.com</i>	45	18	Prodema <i>prodema.com</i>	37
70	Advance Lifts <i>advancelifts.com</i>	218	66	Hanover Architectural Products <i>hanoverpavers.com</i>	214	52	Quality Stone Veneer <i>qualitystoneveneer.com</i>	185
	AIA <i>aia.org</i>	140,141 145,209 223		Hanson Brick <i>hansonbrick.com</i>	144A-B	28	Quikrete <i>quikrete.com</i>	57
24	ALPOLIC/Mitsubishi Chemical FP America Inc <i>alpolic-usa.com</i>	48-49	3	HDI Railing Systems <i>hdிரailing.com</i>	4	74	Rakks <i>rakks.com</i>	223
26	American Specialties Inc <i>americanspecialties.com</i>	53	75	Headwaters Resources <i>flyash.com</i>	223	49	Rigidized Metals <i>rigidized.com</i>	175
78	Arakawa Hanging Systems <i>arakawagrip.com</i>	231	45	High Concrete Structures Inc <i>highconcrete.com</i>	167	62	SAFTI/O'Keeffes Inc <i>safti.com</i>	210
	Architectural Record <i>archrecord.construction.com</i>	20	145-146	Hunter Douglas Contract <i>hunterdouglascontract.com/nbk</i>	12-15	77	Salsbury Industries <i>mailboxes.com</i>	231
1	Armstrong <i>armstrong.com</i>	cov2-1	15	Index-D <i>index-d.com</i>	31		Skyscraper Museum, The <i>skyscraper.org</i>	6
37	Belden Brick Company, The <i>beldenbrick.com</i>	149	40	International Code Council <i>iccsafe.org</i>	154	20	Sloan Valve Company <i>sloanvalve.com</i>	41
14	Bentley Systems Incorporated <i>bentley.com</i>	28	83	Ivalo Lighting Incorporated <i>ivalolighting.com</i>	207	48	Smoke Guard <i>smokeguard.com</i>	172
16	Bobrick <i>bobrick.com</i>	33	27	Knauf <i>thinksulation.com</i>	54	56	Solomon Colors Inc <i>solomoncolors.com</i>	193
46	Bovard Studio <i>bovardstudio.com</i>	168	82,73	Lutron <i>lutron.com</i>	cov4, 221	51	Specialty Doors <i>specialtydoors.com</i>	181
79	Cascade Coil Drapery <i>cascapecoil.com</i>	231	35	MAPEI <i>mapei.us</i>	139	5	Sunbrella brand fabrics <i>sunbrella.com</i>	7
21	CertainTeed Gypsum <i>certainteed.com</i>	42		McGraw-Hill Construction <i>construction.com</i>	216,218	10	Suntech <i>suntech-power.com</i>	21
17	Cooper Lighting <i>cooperlighting.com</i>	35	85,72	MechoShade Systems Inc <i>mechoshade.com</i>	176,220	65,67	ThyssenKrupp Elevator <i>seewhatwebuilt.com</i>	213,215
84	CR Laurence Co Inc <i>cr Laurence.com</i>	201	11	Mitsubishi Electric <i>transforminghvac.com</i>	22	68,71	TOTO <i>totousa.com</i>	199
29	CTS <i>ctsforav.com</i>	58	47	Mortar Net <i>mortarnet.com</i>	170	59	Trespa <i>trespanorthamerica.com</i>	194
58	Daikin AC <i>daikinac.com</i>	196	32	Nana Wall Systems Inc <i>nanawall.com</i>	65	60	Unico System, The <i>unicosystem.com</i>	200
19	Decoustics <i>decoustics.com</i>	39		National Building Museum <i>nbm.org</i>	187,216	9	Uponor <i>uponor-usa.com</i>	19
12	Delta <i>deltafaucet.com</i>	24	34	National Terrazzo & Mosaic Assn <i>ntma.com</i>	122	33	USG Corporation <i>usg.com</i>	66
76,80	Doug Mockett & Company Inc <i>mockett.com</i>	223,231	55	Natural Stone Veneers International Inc <i>nsvi.com</i>	188	31	VT Industries <i>vtindustries.com</i>	62
30	DuPont SentryGlas <i>sentryglas.com</i>	61	64	NATUREMAKER <i>naturemaker.com/ar</i>	212	39	Wausau Tile <i>wausautile.com</i>	152
41	E Dillon & Company <i>edillon.com</i>	155	36	NJ SmartStart Buildings <i>njsmartstartbuildings.com</i>	147	4	Western Red Cedar Lumber Association <i>realcedar.org</i>	5
7	EFCO Corporation <i>efcocorp.com</i>	10-11	38	Oasys <i>oasys-software.com/mailmanager</i>	151	42,43	Won-Door Corporation <i>wondoors.com</i>	156-161
144	Eventscape <i>eventscape.net</i>	164	2	Oldcastle Glass® <i>oldcastleglass.com</i>	2-3	23	World Exposition of Ceramic Tile <i>italytiles.com</i>	46
81	FLEXCO <i>flexcofloors.com</i>	cov3	50	Pilkington <i>pilkington.com</i>	178	69	Yale University Press <i>yalebooks.com/art</i>	218
25	Formglas <i>formglas.com</i>	50	61	Poltrona Frau <i>frauusa.com</i>	202	13	YKK AP America Inc <i>ykkap.com</i>	26-27
53	Gage Corporation <i>gagecorp.net</i>	186	6,8	PPG <i>ppgideascape.com</i>	8-9 16			

Rain Screen Cladding



Trespa North America Ltd.

Trespa Meteon is a flat panel based on thermosetting resins, homogeneously reinforced with cellulose fibers and manufactured under high pressure and temperature. The resultant properties make the product particularly suitable for rain screen cladding applications. What makes Trespa Meteon so unique? Resistance to weather, high color stability, impact resistance, excellent fire behavior, ease of machinability and low maintenance costs. 800-487-3772 www.trespa.com

| Circle 150

Style Meets Technology

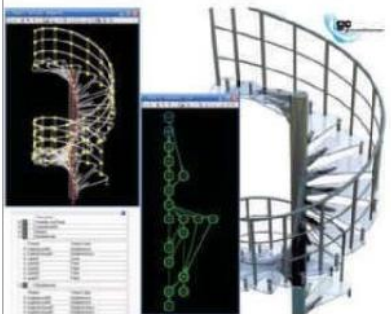


Lutron Electronics, Co. Inc.

Add color, texture and pattern with Lutron shading solutions. Lutron's precision electronically controlled roller shades have expanded to include designer fabric options that brighten any space. Elegant transitions of daylight transform a room, all at the touch of a button. 800-446-1503 www.lutron.com/fabrics

| Circle 153

Design Software



Bentley Systems, Incorporated

GenerativeComponents is unique design software that allows architects and engineers to pursue designs and achieve results that were virtually unthinkable before. Direct your creativity to deliver inspired sustainable buildings that are freer in form and use innovative materials and assemblies. Discover GC today at special pricing for a limited time. 800-BENTLEY www.GenerativeComponents.com

| Circle 151

Two-Way Internet Communication



MechoShade Systems, Inc.

The innovative IQ/485™-IPI (Internet Protocol Interface) saves time and money when commissioning or rescheduling the operation of shading systems. The system permits easy two-way communication through the Internet, enabling integration with other manufacturers' systems, off-site commissioning, systems troubleshooting, and browser-based Ethernet control extensible to Wi-Fi. Contact them at their email address for more information. 718-729-2020 Email marketing@mechoshade.com www.mechoshade.com

| Circle 154

Environmentally Progressive



PPG Industries

One of the industry's best performing low-e glasses, Solarban@ 80 glass is traditionally applied to clear glass with a clear interior lite. Featuring versatile aesthetics, good visible light transmittance and virtually unequalled solar control, this glass can now be combined with Optiblu glass to produce three dynamic blue-green tints. To order a sample kit, visit their web site. 888-PPG-IDEA www.ppgideascape.com/SB80

| Circle 152

ARCHITECTURAL RECORD
08
INNOVATION
conference

INNOVATIVE PRODUCTS FROM
INNOVATION SPONSORS

Cavity Wall Drainage System



Mortar Net® USA

New Innovative, Patented TOTALFlash™ by Mortar Net® USA—A historic breakthrough for controlling moisture-damage and mold-growth in masonry cavity walls. ALL the “best practices” of today’s moisture-control arrive pre-assembled onto handy, 5-ft. panels of pre-cut flexible flashing. Built-in termination bar, edge-dam, no-clog drainage mat, weep tabs, stainless steel drip-edge, clearly specified lap-joints. 800-664-6638 www.MortarNet.com

| Circle 155

Stainless Steel Cable Systems



Hayn Lines

From the contemporary look of stainless steel, glass, or chrome, to the warm look of wood or brass, Hayn Lines will accent any decor. Marine tested and approved with a 45-year reputation for quality, delivery, pricing, and customer support, Hayn is now a top choice for architects. 800-346-4296 Fax number 800-441-4296 www.haynlines.com

| Circle 158

Architectural Natural Stone



Vermont Structural Slate Company

For almost 150 years, Vermont Structural Slate Company has quarried and fabricated top-quality natural Vermont slates, producing all types of architectural, flooring and roofing slate products. They complement their range of local materials with select slates, quartzites, sandstones, limestones, marbles, granites and basalts from around the world. They specialize in architectural projects and can help architects evaluate, detail and specify natural stone. Call for their brochures and boxed full range of 30 stone samples. Photo of Gunnison Basalt in a private residence designed by Acjaye Associates. 800-343-1900 www.vermontstructuralslate.com

| Circle 156

Columns, Balustrades & Cornices



Architectural Columns & Balustrades by Melton Classics

Architectural Columns & Balustrades by Melton Classics provides the design professional with a comprehensive selection of quality architectural products including architectural columns, balustrades, mouldings, cornices, and a wide array of architectural elements. Architectural columns are available plain or fluted, load-bearing or column covers, round or square in fiberglass, fiberglass/marble composite, synthetic stone, cast stone, GFRC, and wood for paint or stain. Architectural Columns & Balustrades by Melton Classics offers a maintenance free balustrade product ideal for any application. 800-963-3060 www.meltonclassics.com

| Circle 159

Bathroom Accessories



Cifial USA

Exclusively engineered by renowned Portuguese designer Carlos Aguiar, the Techno M3 series combines flawless lines with a modern twist to create an unrivaled look to any home. With dimensions of 5-in. long by 9-in. high, the 3-Hole Widespread Faucet takes center stage in any bathroom. Cifial’s M3 collection is available in a choice of four designer finishes including polished chrome, satin nickel, polished nickel and weathered. 800-528-4904 www.cifialusa.com

| Circle 157

Flexible Mouldings



Architectural Products by Outwater, LLC

Achieve radii never before possible. Outwater’s Flexible Mouldings enable installers to easily create on demand “Bend To Fit” radii at the time of installation to accommodate the curvature of almost any inside, outside or arch radius application without profile deformation or causing excess stress to the mounting surface. Comprising a thoroughly impervious, dimensionally stable molded polymer, Outwater’s Flexible Mouldings offer sharply defined details, perfect dimensions, and extremely consistent quality. Designed to be handled and installed utilizing typical wood-working equipment, Outwater’s Flexible Mouldings do not require priming. 800-835-4400 www.Outwater.com

| Circle 160

Ideas + Materials = Solutions

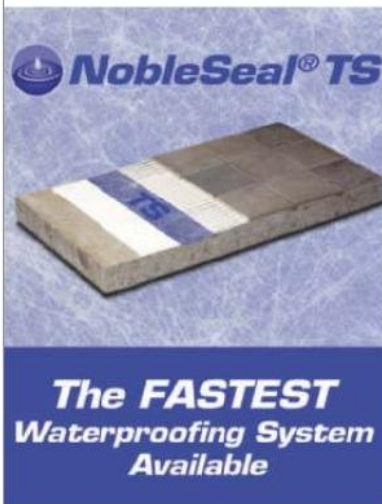


Reynolds Polymer Technology, Inc.

Introducing the new R-Cast™ Ice product. Featuring a unique, ice-like surface, simply adding lighting brings your design to life. With more than 30 years experience developing and manufacturing acrylic products, they've become the leader in acrylic engineering, fabrication, and installation — making them a top choice for your next project. 800-433-9293 www.reynoldspolymer.com

| Circle 161

Thin Sheet Membrane



Noble Company

NobleSeal®TS is a thin sheet membrane that provides thin-bed waterproofing and crack isolation. When TS is bonded with NobleBond EXT, a shower (walls and floor) can be waterproofed in less than 4 hours. The system requires no curing so work can progress as soon as it is installed. NobleSeal TS is also ideal for steam showers. Proven performance with millions of square feet installed. 800-878-5788 www.noblecompany.com

| Circle 164

Solid Surfaces Possibilities



Samsung Staron

Staron solid-surfaces by Samsung, a leader in technology, can enhance the look of any kitchen, bathroom or work surface. With over 70 surface colors, plus integral sinks/bowls, it's easy to find design solutions to coordinate with any interior. Staron is an attractive, durable and easy-maintenance surface for commercial settings and is approved for food preparation areas in restaurants. Also, it's a homogeneous material, so color is consistent throughout the countertop, making it easy to buff away scratches. Staron Solid Surface and Tempest are GREENGUARD indoor Air Quality Certified® 800-795-7177 www.staron.com

| Circle 162

Wall Tile Collection



Viva Ceramica Slate

"It's the result of the collaboration with Patrizia Moroso, who knows what dreams are about and Massimo Gardone, the photographer with the magical eye who can make black explode into a thousand colours. Two people I really like to work with because they share my passion for the unexplored territory of new applications where a super thin, super light, 100x100 indestructible tile can become a bathroom, a building decoration or a work of art, depending on what the designers feel like. Thanks Patrizia, thanks Massimo for teaching all of us that we can see better with our eyes closed." -Fabrizio Zanfi www.cerviva.it

| Circle 165

Exterior Building Panels With Digital Print

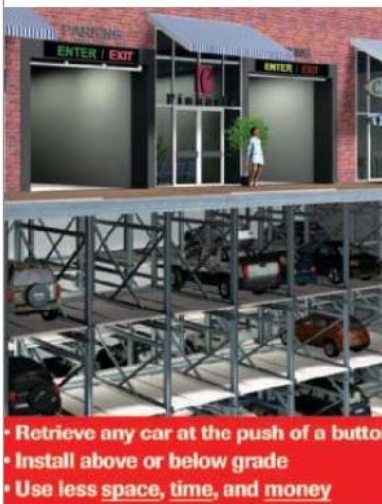


ABET Laminati

Applied as a Rainscreen panel system, ABET LAMINATI's Exterior Building Panels are: graffiti and vandal resistant, fire resistant, environmentally friendly and will not delaminate. Compact, self-supporting, high pressure laminate panels are available in a wide range of solid colors, woodgrains, metallics and concrete. High resolution digital images of logos, photos etc. can be printed right on the panels. Colorfastness is guaranteed for 10 years and panel integrity for 20 years. Notable applications in the US include the Brooklyn Library and North Fork Banks. For samples call toll free or visit their web site. 800-228-2238 www.abetlaminati.com

| Circle 163

Automated Parking Garage



Boomerang Systems

Boomerang's reliable automated parking systems use 50% less space than ramp garages by storing cars 2 to 20 levels high on a small footprint. Systems can be wrapped in any façade and configured to fit almost any project. Best of all, the total cost per space is less than structured parking decks. Proudly made in the U.S.A. 888-606-9395 Email info@boomerangsystems.com www.boomerangsystems.com

- Retrieve any car at the push of a button
- Install above or below grade
- Use less space, time, and money

| Circle 166

Exterior Bifold Door System



La Cantina Doors, Inc.

New all-aluminum exterior bifold door system. Featuring a sleek design profile and concealed multi-point locks throughout. Manufactured in the USA, lead times start at just four weeks. Clear or Bronze Anodized finishes are standard with custom color options available. Systems up to 52-ft. wide and 10-ft. tall are available. 866-414-8933 www.lacantinadoors.com

| Circle 167

Daylighting for Enclosed Pools



Structures Unlimited, Inc.

One of the most highly insulating, diffuse-light-transmitting systems in the world for enclosing pools. The ultimate in energy efficiency with insulation values as high as R-20. Factory pre-finished, corrosion-free, pre-engineered aluminum box beams form a total composite building system with Kalwall® translucent sandwich panels. A screened retractable roof system allows for fresh air and an outdoor swimming experience without bugs, leaves or other debris. Sidewalls can consist of sliding glass doors or translucent Kalwall for privacy, as well as brick, masonry or other materials. Manufactured in the U.S.A. to meet or exceed all local building codes. 800-225-3895 www.structuresunlimitedinc.com

| Circle 170

Reduce Energy Costs with Daylighting



Major Industries, Inc.

Guardian 275® Translucent Daylighting Panels from Major Industries allow natural light to illuminate interiors while eliminating unwanted glare and hot-spots. Guardian 275® systems are also a lightweight and energy-saving alternative to traditional glass skylights and curtainwall. Major's daylighting systems are custom-designed and built for any environment—and are backed by industry-long warranties. 888-759-2678; 715-842-4616 Fax number 715-848-3336 www.majorskylights.com

| Circle 168

Acoustical Tile



CertainTeed Ceilings

Turn to Adagio for superior acoustical performance. Adagio by CertainTeed Ceilings combines the sound absorption properties of high-density fiberglass with the sound containment qualities of mineral fiber – creating privacy in surroundings where it matters most, while maintaining superior comfort. NRC (0.95), CAC (40), LEED Recycled % = 45% 800-233-8990 www.certainteed.com/ceilings

| Circle 171

Contemporary Designer Levers



SARGENT Manufacturing

Studio Collection, Metro Elements by SARGENT®: 23 superbly stylized brass and stainless steel door levers, compatible with commercial grade 1, mortise and tubular locks, access control locks, exit devices and master key systems. Aesthetically sophisticated door security solutions. Available in 13 finishes. 800-727-5477 www.sargentlock.com

| Circle 169

One-Way Mirrors



Glas Trösch AG

Unlimited design options for SPYMIRROR in interior and exterior applications, i.e. coverage of information displays, TV's etc. SPYMIRROR is a one-way mirror which allows for observations without being seen under a distinct lighting ratio. There are 3 options with increased clarity (LT): 1%, 12%, 20% available in 3mm to 12mm, in laminated 6mm to 12mm. Email hytechglass@glastroesch.ch www.luxar.ch

| Circle 172

Copper Chimney Pots



Jack Arnold — European Copper

Eliminate rooftop clutter with recyclable, innovative UL-listed copper chimney pots. From Jack Arnold, AIA, European Copper chimney pots are the only UL-listed pots for both masonry and metal flues. Withstands all types of climate conditions, building code compliant. Available in three unique styles and seven sizes, easy to install. Patented. 800-391-0014 europeancopperchimneypots.com

| Circle 173

Frameless Glass Handrail System



Glass and Glass

Glass and Glass's unique and Patent Pending FLEXTECH Frameless Interior Glass Railing System is ideal for residential and commercial use. The system is Made of 316 marine grade stainless steel, has been tested by Dade County approved labs and is 90% American Made. Services include design, engineering, manufacturing and installation complying with South Florida building codes, as well as other municipalities in the United States and worldwide. 305-416-5001 www.glassandglass.com

| Circle 176

Fabricated Bronze Sculptures



Peter Findley Gallery

"Guy Dill is one of our contemporary sculptors who has consistently over the past 20 years been able to achieve what might be called meaningful monumentality — sculpture that proclaims itself as needing to be made in monumental proportions," Steven Nash, Ex-director, Nasher Sculpture Center, Dallas. Fabricated bronze sculptures created by nationally known artist Guy Dill available for public and private commissions. Dill's work is included in 20 Museum collections and over 60 public and corporate collections: Qualcomm-Mitsubishi-Transamerica-Sony. Left: Nara, 2002, Bronze, 10 x 9-3/4 x 2-3/4-ft. — Brussels, Belgium www.findlay.com

| Circle 174

Daylighting Program



MechoShade

SolarIra[®], MechoShade Systems' groundbreaking WindowManagement[®] daylighting program, integrates digitally addressable motorized shades with automated, solar-control software. The system tracks the sun and sensors detect cloudy conditions or excessive glare and lower the shades incrementally to diminish glare and provide occupant comfort. The system offers brightness, shadow and manual overrides that further enhance the system's effectiveness. www.mechoshade.com

| Circle 177

Customized Sunshade Systems



Unicel Architectural Corp.

Unicel Architectural specializes in developing customized shading systems that allow optimal daylight and sunshade, reducing glare, heat gain and cooling energy consumption. Thanks to these energy-saving features, Unicel Architectural Louvers help architectural projects qualify for LEED credits. The sunscreens manufactured by Unicel Architectural are available with different types of louvers and are fixed horizontally or vertically, at any predetermined angle to suit the project's specific demands. Made of extruded aluminum with full rust-free components, the sunshades have elegant lines and curves. 800-668-1580 www.unicelarchitectural.com

| Circle 175

Commercial Grade Outdoor Furniture



Modern Outdoor

Commercial grade construction + residential aesthetics, made in the U.S.A., short lead times, and environmentally conscious materials. These qualities are at the core of Modern Outdoor—fine outdoor furniture for those interested in the clean simple lines of the modern aesthetic. They offer four complete lines that encompass all of your outdoor needs—chairs, tables, benches, settees, club chairs, sofas, ottomans, daybeds, chaise lounges, planters, bar-height products, tea carts, and many accent pieces as well. 818-785-0171 Fax number 818-785-0168 Email info@modernoutdoor.com www.modernoutdoor.com

| Circle 178

Saunas



Finlandia Sauna Products, Inc.

Finlandia Sauna has manufactured exclusive and authentic saunas (no infrareds) since 1964. Finlandia offers precut sauna packages and modular sauna rooms as an affordable luxury that can be included in any remodel or new construction. The company markets four all-clear western softwoods and is the only manufacturer to use 1-in. by 4-in. paneling, instead of the cheaper 1/2-in. by 4-in. material used by others. The complete package includes a choice of electric sauna heater with optional AV EverReady, the exclusive new energy saving heater which is always on—no heat up necessary. 800-354-3342 www.finlandiasauna.com

| Circle 179

European Cobblestone



Eurocobble

An updated catalog features authentic European cobblestone preassembled in modular form. Modules in square, fan, concentric ring, and custom formats arrive at the job site ready for a quick and easy installation. Pedestrian or vehicular application. Eurocobble® has supplied the design community with traditional and customized paving solutions for over 25 years. Call toll free or visit the web site. 877-877-5012 www.eurocobble.com

| Circle 182

Architectural Ceiling Fans & Lighting



G Squared Art

Balanced design that is light and airy. The San Francisco ceiling fan—a GOOD DESIGN Award winner. Whisper quiet, powerful, reliable and beautifully made this timeless design is also available with a light kit and can be used on 8-ft. ceilings or on cathedral ceilings with optional downrods up to 6-ft. long. Suitable for sloped ceilings up to 29 degrees. Lifetime warranty. Air conditioning can increase your electricity bill by a third or more. A fan uses one tenth of the energy. To buy high-design architectural fans and lighting please visit G Squared Art's web site or call M-F 7 AM - 5 PM PST. 877-858-5333 www.g2art.com



| Circle 180

Three-Dimensional Trellis System



greenscreen®

greenscreen® is an innovative landscape trellis system that provides endless possibilities for creating "green wall" landscape elements, fencing, screening, and enclosures. The main component is the unique 3-D wire panel. Rigid, light weight, and incredibly strong, greenscreen® can span between freestanding structural members or between floors, wall mount off the building surface, and stack or join to cover larger surfaces. Made from recycled content steel and with colors and a complete system of attachments: hardware available. Panels can be cut, notched, trimmed, or curved. 800-450-3494 www.greenscreen.com

| Circle 183

Elegant Outdoor Sconces



Hunza Lighting USA

Hunza offers a choice of two Pillar Lites designed to light both upwards and downwards on an exterior wall or pillar. The standard Pillar uses twin MR16 lamps while the Euro Pillar offers distinctive, machined styling and more compact dimensions with two MR11 lamps. 310-560-7310 www.hunzausa.com

| Circle 181

Insulated Concrete Forms



Amvic Building System

Amvic ICF's are hollow, lightweight; "stay in place" concrete forms made of 2 panels of Expanded Polystyrene (EPS) that are connected by 100% recycled polypropylene webs. Amvic ICF's provide a comprehensive 5 in 1 building solution, structural strength, insulation, vapour barrier, sound barrier, surface for installing drywall and exterior finishes. They are energy efficient and Green building products. 877-470-9991 www.amvicsystem.com

| Circle 184

The industry leader in
Quality Mailboxes



mailboxes.com
1-800-MAILBOX

Contact us today for a FREE quote or catalog!

1010 East 62nd Street • Los Angeles, CA 90001-1598
Phone: 1 800 624 5269 • Fax: 1 800 624 5299



CIRCLE 77



the ultimate cable system

Arakawa

Arakawa Hanging Systems supplies quick release cable Grippers. Easily install displays, secure them quickly and change them with little effort.

Shown here is our popular floor tensioner that also works well as a tumbuckle for balustrades. This gripper, like many of Arakawa's products, encompass multiple uses and flexible designs. The mechanical grip uses no set screws, which saves time and eliminates damaged cable.

Visit us today.

www.arakawagrip.com



Arakawa Hanging Systems fax: 503.236.0427 toll free: 888.ARAKAWA

CIRCLE 78

Johnson & Johnson
New York



Woven wire fabric from Cascade Coil

Projects include multi-story wire mesh draperies for hotels, auditoriums, and casinos; curved dividers for visual merchandising; window treatments for private homes; safety screening for industrial settings; sculptural forms for urban gardens; decorative interior/exterior wall coverings for buildings and parking garages; aviary round weave screening for animal habitats, and see-through appealing barriers for commercial security. Whatever the application, let us help you realize your creative vision.



CIRCLE 79

New Solution for Old Problems

Good Looking
Units to
Access Data.

PCS40

Small, compact and great looking, PCS40 is a simple unit with a variety of data selections. Both go into slot 2 13/16" by 2 3/16". Shallow unit is 1" deep. Deep unit is 2 11/16" deep.

Two versions: Shallow with specific connectors, Deep with Shutter Bushing to allow plugs to be fed from source.

Two finishes: Black Anodized or Satin Aluminum.



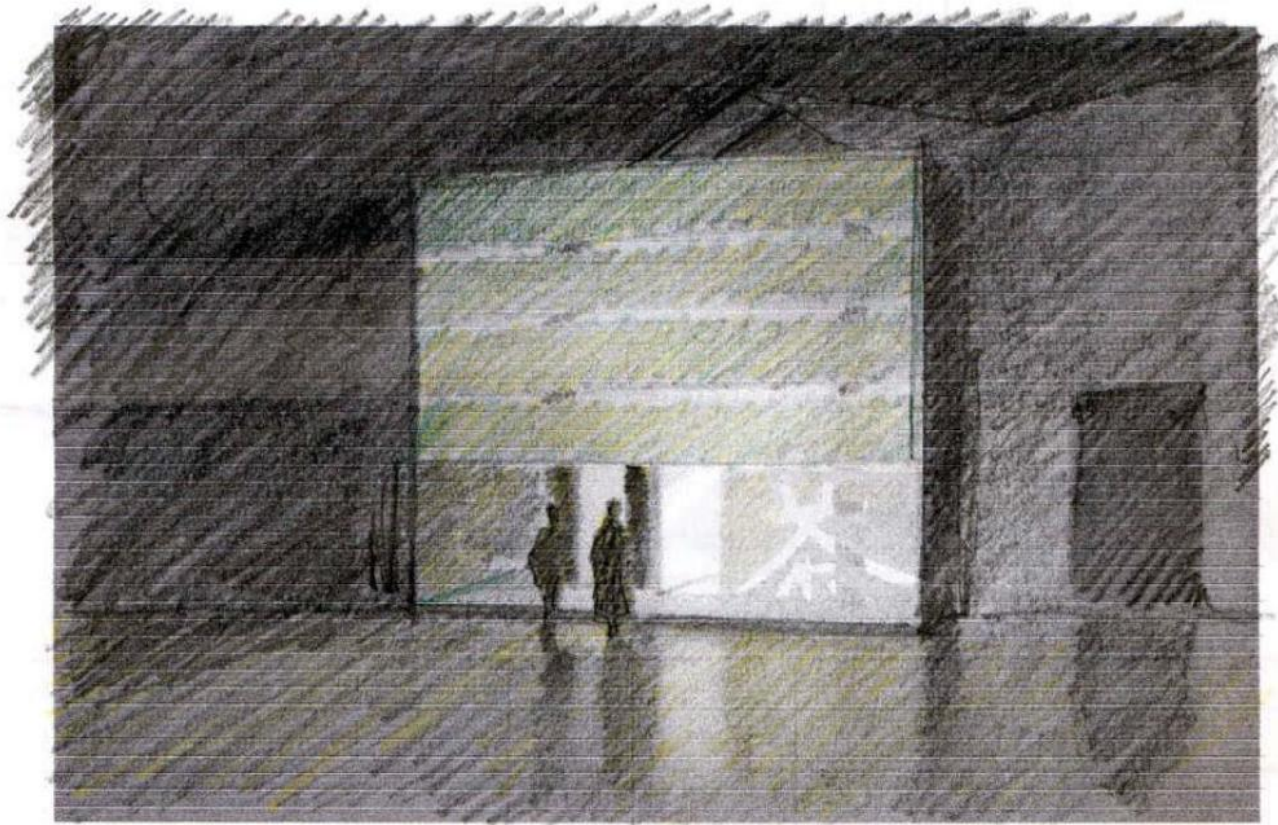
"FINE ARCHITECTURAL HARDWARE FOR YOUR FINE FURNITURE"®

Doug Mockett & Company, Inc. • Manhattan Beach, CA • 800.525.1269

MOCKETT
DOUG MOCKETT & COMPANY, INC.
www.mockett.com

CIRCLE 80

The Architect's Hand



Night View (left), 2005; *Metal Screen Option* (below), 2005. Both images are in HB and Prismacolor pencil on recycled white paper over photographs.

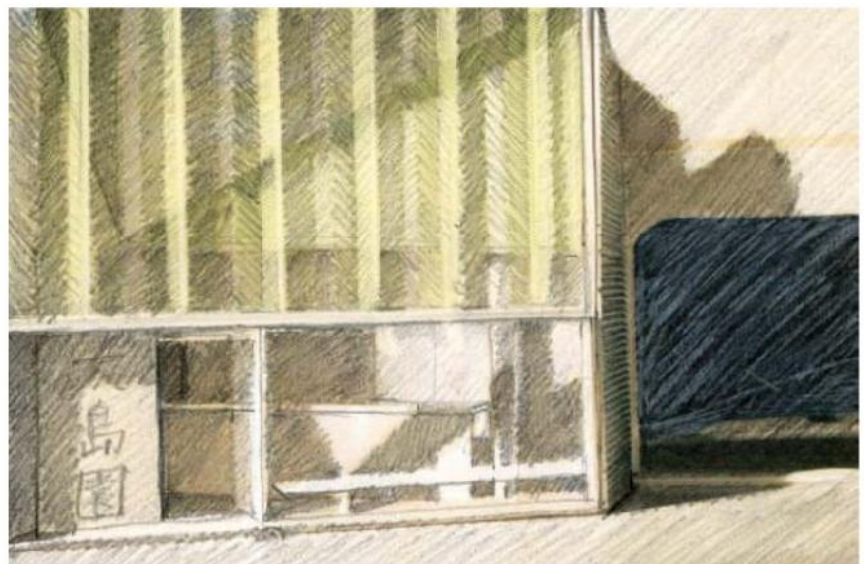
Message in a sketch

By Anya Kaplan-Seem

For Hiroki Yoshihara and Sandra McKee, the drawings they made of their Ohshimaen Tea Shop in Saltama, Japan, “became a real conversation, a way to explore and exchange ideas.” After collaborating on the Tokyo International Forum while at Rafael Viñoly’s office, the two architects formed their New York- and Tokyo-based firm, Yoshihara McKee Architects, in 2005. Key to the success of their cross-continental partnership is their use of drawing as a mode of communication.

To explore general themes and particular details of their tea-shop design, Yoshihara and McKee used a common underlay of model photographs to develop separate sketches they later shared. The drawings shown here were done by Yoshihara in HB and Prismacolor pencils on recycled white paper over photographs. They explore the transparency of the project’s envelope. “We wanted to see if the facade would have the ephemeral quality we were going for,” explains McKee.

Yoshihara’s sketches exemplify drawing as thinking rather than as representation, and they appeared in a Fordham University exhibition in New York City, cocurated by McKee and Colin Cathcart, titled *Architectural Drawing: Thought, Conviction, Resolution*. The show displayed the paper trails – everything from napkin-back sketches to computer renderings – left by nine firms’ design processes. As the show and Yoshihara McKee’s practice both suggest, to draw is to design, and to design one must draw. ■





style

▶ rubber flooring

When it comes to performance and selection, FLEXCO® rubber flooring is leading the way. Naturally resistant to mold and mildew, FLEXCO rubber floors are designed for durability, versatility and slip resistance, plus they're very quiet and comfortable under foot. Choose from textured, smooth, and environmentally friendly tile, in colors and patterns to match any design or application.

800.633.3151 | flexcofloors.com

THAT WILL LEAVE YOU FLOORED.



FLEXCO

innovative design. flooring performance.

CIRCLE 81

“We designed our building to use 1.28 watts per square foot of lighting power. With Quantum™, it’s using only 0.38 — that’s 70% less.”



Glenn Hughes
Director of Construction for The New York Times Company during design, installation, and commissioning of The New York Times Building



© Photo by Nic Lehoux



© Photo by Brian Rose

the problem:

more electricity is used for lighting than any other building system*

the solution:

manage light with Quantum

the strategies:

- light level tuning
- daylight harvesting
- occupancy sensing

the details:

www.lutron.com/nyt

the results:

- **70%** lighting energy saved
- **\$315,100** saved per year
- **1,250** metric tons of CO₂ emissions prevented each year

Introducing Quantum, the total light management system that The New York Times Building uses to save energy while improving the comfort and productivity of the people inside. Call **1.866.299.2073** to find out how Quantum can enhance your building.

save energy with Lutron® 

 **LUTRON®**

© 2008 Lutron Electronics Co., Inc.

* Source: U.S. Energy Information Administration